



# GP referrer's guide

## 2012/2013

University Hospitals of Leicester



NHS Trust

Published April 2012

*Caring at its best*

# Welcome

**Robyn Lotto**  
BRU Research Nurse



# Welcome

We are one of the biggest acute teaching Trusts in the country offering close to 80 specialist services to the 1 million people of Leicester, Leicestershire and Rutland and for our tertiary services we serve a further 2-3 million people across the wider East Midlands and beyond

This guide is designed to help clinicians in general practice access our services and find out a little more about the teams who deliver them.

Leicester's hospitals are well known for the work we do in cardiovascular surgery, respiratory illness, and diabetes. What is not quite so well known is that we are home to three biomedical research units specialising in heart disease, respiratory disease, renal medicine and asthma and exercise and sports medicine as therapy. This makes Leicester one of the most research active Trusts in the country outside of London Oxford and Cambridge. Of course a well established and growing research portfolio brings resource and clinical talent to the Trust and whilst resource in the NHS is always tight I'm pleased to say that our clinical teams are in my opinion, second to none.

We know that primary care is going through major change and we also know that the expectations of patients are justifiably increasing. We are all, in primary and secondary care, nearly always a little busier than we would like. For that reason we have been working hard to improve our systems for communicating with GP colleagues. I know that rapid access to test results and quick turnaround of discharge summaries make your jobs easier to do. We are also working on the rapid turnaround of out patient letters. I appreciate that you sometimes need to speak to one of our clinicians for a second opinion or to a member of staff to check on the availability of appointments and as such we are creating a GP hotline with dedicated staff to help you get through to the people you need, when you need them.

I hope you find this guide useful, you can also access it online at: <http://www.leicestershospitals.nhs.uk/professionals/gp-referrers-guide/>

We look forward to working with you,

Yours sincerely,

**Dr. Kevin Harris**

Medical Director

To discuss any of our services further please contact: Marina Muirhead, Head of Services for GPs on 0116 258 8598 / 07432 623 350 or alternatively you can email her on: [marina.muirhead@uhl-tr.nhs.uk](mailto:marina.muirhead@uhl-tr.nhs.uk)



Welcome



**To note:** this paper based copy of our directory is up to date at the point of publishing, for the most up to date version please use the following link: <http://www.leicestershospitals.nhs.uk/professionals/gp-referrers-guide/>.

# Welcome

Our core purpose is to provide

'Caring at its best'.

This is supported by our trust values...

- **We treat people how we would like to be treated**
- **We do what we say we are going to do**
- **We are one team and we are best when we work together**
- **We are passionate and creative in our work**
- **We focus on what matters most**



Over the last year we have spent a great deal of time and effort on quality and compassion in our approach to nursing. We introduced hourly ward rounds for all patients before this became the vogue and we have made sure that our nursing leaders are more visible and accessible for patients and their relatives. When we look at our quality indicators they show that this focus is making a real difference; falls and pressure ulcers are showing significant declines as a result of increased vigilance and extra resource in tissue viability nurses and training. Just as importantly the incidences of hospital acquired infections have once again reduced from what was already recognised as good position... this year there has been a 45% reduction in MRSA.

We know that our ward teams are expected to be clinically excellent; we also know that the thing which makes the biggest impression on patients and their families is the time which nurses and other health professionals take to care. As such this year we are investing in ward staff and midwives to increase our availability for patients on our busiest wards.

Nursing is a profession, a vocation and a passion, the teams in Leicester know that and we know what our patients expect from us. Our job is to deliver it every day.

Yours sincerely,

**Suzanne Hinchliffe**

Chief Operating Officer / Chief Nurse



# General information

**Yatin Chauhan**  
Radiographer





# General Information

University Hospitals Leicester sites:



## Leicester Royal Infirmary

Infirmary Square  
Leicester  
LE1 5WW



## Glenfield Hospital

Groby Road  
Leicester  
LE3 9QP



## Leicester General Hospital

Gwendolen Road  
Leicester  
LE5 4PW

### Main switchboard:

For all three hospitals in Leicester: 0300 303 1573

**Main Fax:** 0116 258 4666

**Website:** [www.leicestershospitals.nhs.uk](http://www.leicestershospitals.nhs.uk)

### GP fast access to switchboard:

0116 254 6961

0116 254 9816

0116 254 9866

## Patient Information & Liaison

**Telephone:** 08081 788337

**Email:** [pils.complaints.compliments@uhl-tr.nhs.uk](mailto:pils.complaints.compliments@uhl-tr.nhs.uk)

### Write to us:

Patient Information and Liaison Service  
Gwendolen House  
Gwendolen Road  
Leicester  
LE5 4QF

## Head of Services for GPs

**Telephone:** 0116 258 8598 / 07432 623 350

**Email:** [marina.muirhead@uhl-tr.nhs.uk](mailto:marina.muirhead@uhl-tr.nhs.uk)

## Patient booking centre

**Phone:** 0300 303 1563

**Fax:** 0116 258 3257

**Email:** [bookingcentre@uhl-tr.nhs.uk](mailto:bookingcentre@uhl-tr.nhs.uk)

### Opening Hours:

8am to 5pm Monday to Friday  
Closed on bank holidays

## Consultant contact directory

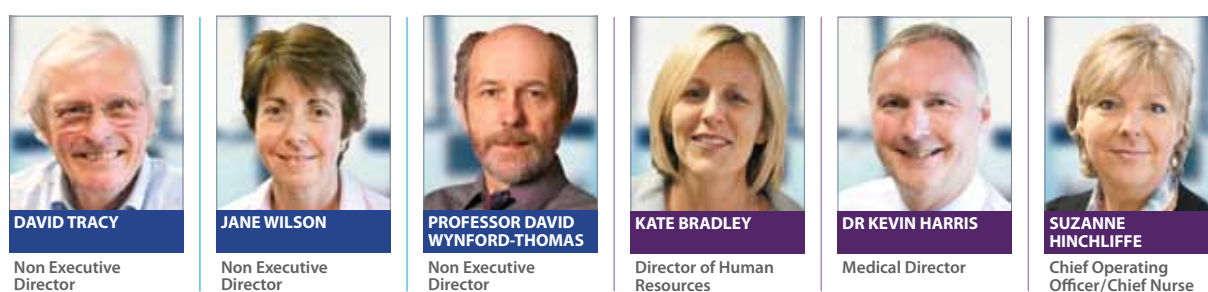
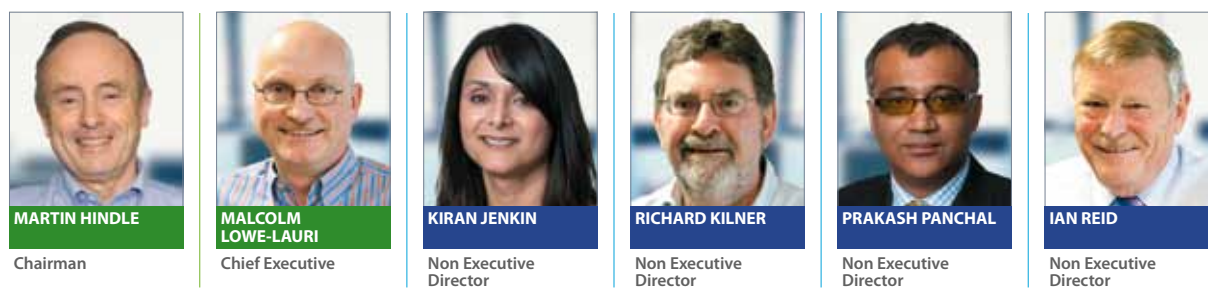
**A full consultant directory,  
(which includes email addresses)  
can be found by using the link below:**

[http://www.leicestershospitals.nhs.uk/patients/  
find-a-consultant/](http://www.leicestershospitals.nhs.uk/patients/find-a-consultant/)

## Electronic GP referrer's guide

[http://www.leicestershospitals.nhs.uk/professionals/  
gp-referrers-guide/](http://www.leicestershospitals.nhs.uk/professionals/gp-referrers-guide/)

# UHL Senior Management Team



# Our clinical divisions

## ACUTE CARE:

### Divisional Director

Doug Skehan

### Divisional Manager

Monica Harris

### Divisional Head of Nursing

Sue Mason

The Acute care division consists of the following specialties:

- Cardio
- Renal
- Critical Care
- Emergency Department
- Medicine
- Respiratory Medicine

## CLINICAL SUPPORT:

### Divisional Director

Shona Campbell

### Divisional Manager

Neil Doherty

### Divisional Head of Nursing

Elaine Ryan

The clinical support division consists of the following specialties:

- Anaesthesia
- Imaging
- Pathology
- Therapy
- Phlebotomy
- Central Outpatients
- Pharmacy

## PLANNED CARE:

### Divisional Director

Andrew Furlong

### Divisional Manager

Nigel Kee

### Divisional Head of Nursing

Julia Ball

The planned care division consists of the following specialties:

- Cancer
- Haematology
- Oncology
- GI Medicine and Surgery
- Urology
- Musculo Skeletal
- Specialist Surgery - Ophthalmology, Plastics, Breast Care, Vascular services, and Head and Neck Service (ENT, Maxillo-facial, orthodontics and Restorative Dentistry)

## WOMEN'S AND CHILDREN'S

### Divisional Director

Pete Rabey

### Divisional Manager

David Yeomanson

### Divisional Head of Nursing

Kate Wilkins

The women's and children's divisions is made up of the following specialties:

- Maternity
- Neonatology
- Gynaecology
- Sexual Health
- Clinical Genetics
- Paediatric General and Sub Specialty Surgery
- Paediatric General Medicine and Sub Specialty Medicine



# Our services

Allergies	7
Allergies - Children's	8
Assisted Conception Unit	9
Breast care services	10
Cardiac Investigations Department	11
Cardiology services	12
Chemical Pathology	13
Clinical Genetics	14
Clinical Haematology services	15
Contraception, sexual and reproductive health services	16
Cystic Fibrosis - children's	17
Cytogenetics	18
Dermatology services	19
Dermatology - Children's	20
Diabetes, Endocrinology and metabolic medicine services	21
Diabetes - Children's	22
Ear, nose and throat services	23
East Midlands Teenage and Young Adults Integrated Cancer Service	24
Elective Orthopaedics service (Adult)	25
Emergency Department	26
Endocrinology - Children's	27
Fracture Clinic	28
Gastroenterology	29
Gastroenterology - Children's	30
General and Colorectal surgery	31
General Medicine - Children's	32
General Paediatric Respiratory Medicine	33
Gynaecology services	34
Haematology - Children's	35
Heptobiliary services	36
Hepatology	37
HIV - Children's	38
Hypertension	39
Imaging and medical physics	40
Imaging and medical physics continued	41
Imaging and medical physics continued	42
Immunology services (Adult)	43
Immunology services (Adult) continued	44
Immunology - Children's	45
Infectious diseases services	46

Inflammatory bowel disease	47
Max fax	49
Metabolic - children's	50
Neonatal service	51
Nephrology	52
Nephrology - Children's	53
Neurology service	54
Neurology - children's	55
Neurosurgery	56
Obesity service	57
Obstetrics and fetal maternal medicine	58
Occupational therapy services	59
Older peoples services	60
Older peoples services continued	61
Oncology	62
Oncology - Children's	63
Ophthalmology services	64
Orthodontics & Restorative Dentistry	65
Paediatric General Surgery	66
Paediatric Urology	67
Pain management services	68
Physiotherapy services	69
Plastic surgery	70
Respiratory disorders, lung disorders and thoracic medicine	71
Respiratory disorders, lung disorders and thoracic medicine continued	72
Rheumatology services	73
Rheumatology - Children's	74
Sexual Health - Genitourinary Medicine	75
Sleep disorders	76
Sleep - children's	77
Speech and language therapy	78
Sports medicine	79
Stroke and TIA service	80
TB - children's	81
Transplant (General Surgery - Endocrine Surgery)	82
Trauma and Orthopaedics - children's	83
Upper GI / General Surgery	84
Urology services	85
Vascular surgery	86



# Services A-L

**Sanchia Palmer**  
Deputy Sister - ED



# Allergies

**Clinical Head of Service:** Dr M Duddridge

**Main telephone number:** 0116 258 3651

**Main fax number:**

Glenfield Hospital: 0116 236 6702

Leicester Royal Infirmary: 0116 258 6704

## Sites delivered from

Leicester Royal Infirmary  
Glenfield Hospital

## Consultants working within this Service

Dr R Baretto (also see Immunology)

Dr A Croom

Dr M Duddridge (also see Immunology)

Dr N Khan

Professor A Wardlaw

## How to access this service

Choose and Book.

## Service details

- A comprehensive adult allergy service is provided at both Leicester Royal Infirmary and Glenfield Hospital (GH) with care provided for all conditions listed in the Allergy specialised services definition.
- Patients are seen with anaphylaxis, food allergy and intolerance, multi-system allergic disease, rhinosinusitis & conjunctivitis, drug allergy, insect venom allergy, latex allergy, occupational allergy, urticaria and angioedema (both acute and chronic, and allergic & non-allergic aetiology), hypereosinophilic diseases, and mastocytosis.
- Patients with eczema, asthma and gastrointestinal allergy are also seen, but are predominantly evaluated by our dermatology, respiratory, and gastroenterology colleagues.
- The patch testing service for contact dermatitis is provided by the dermatology service, with skin prick testing for type 1 hypersensitivity (allergy) provided by this service.
- Patients are investigated with a range of skin tests, and laboratory tests are performed at the CPA-accredited Immunology laboratory at Leicester Royal Infirmary.

- Outpatients referred to the service are seen in clinics at both sites:
  - Monday am Glenfield Hospital  
Dr A Croom (general allergy)
  - Monday pm Leicester Royal Infirmary  
Dr R Baretto (general allergy)
  - Tuesday am Glenfield Hospital  
Dr A Croom (general allergy)
  - Wednesday am Glenfield Hospital  
Dr A Croom (food allergy)
  - Thursday am Leicester Royal Infirmary  
Mrs C Steele (extended scope practitioner senior dietician-led food allergy clinic supervised by Dr M Duddridge & Dr R Baretto)
  - Thursday pm Glenfield Hospital Prof AJ Wardlaw (general allergy + hypereosinophilia)
  - Friday am Glenfield Hospital  
Dr N Khan (general allergy + drug allergy)
- Day case procedures:
  - Food, drug and latex open and blinded challenge testing
  - Bee and wasp venom immunotherapy
  - Aeroallergen immunotherapy
  - Vaccine administration in high risk patients
- Day Case activity:
  - Variable days Glenfield Hospital Dr A Croom
  - Thursday am Glenfield Hospital Dr N Khan
  - Friday am Leicester Royal Infirmary Dr R Baretto
- Immunotherapy:
  - Monday am Glenfield Hospital Dr A Croom (specialist nurse-led)
  - Thursday am Glenfield Hospital Dr N Khan (specialist nurse-led)
  - Friday pm Leicester Royal Infirmary Dr R Baretto
- The multidisciplinary team includes both specialist nurses and dieticians. Adrenaline auto-injector device training is provided by specialist nurses to all patients issued with these devices. Food allergy services at both hospitals have dietetic support, with an Extended Scope Practitioner at Leicester Royal Infirmary.
- Complex cases are discussed at monthly multidisciplinary team meetings and at quarterly regional network meetings.
- The Allergy service is actively involved in clinical audit and research.



# Allergies - Childrens

**Clinical Head of Service:** Dr D Luyt

**Service Manager:** Mr N Kirk

**Main telephone number:** 01162585970

**Main fax number:** 0116 2587637

## Sites delivered from

Leicester Royal Infirmary

## Consultants working within this Service

Dr D Luyt

## How to access this service

Choose and book.

### Paper referrals to:

Childrens Hospital Referrals Management Team

Childrens Admin Centre

Leicester Royal Infirmary

Infirmery Square

Leicester LE1 5WW

Or by fax to number above.

## Service details

- Inpatient, Day case & out patient services
- Allergy
- Skin Prick Testing
- Nurse led testing
- De-sensitisation.

# Assisted Conception Unit

**Clinical Head of Service:** Janine Elson  
**Main telephone number:** 0116 2585922  
**Main fax number:** 0116 2587688

## Sites delivered from

The Leicester Fertility Centre, Assisted Conception Unit, Kensington Building, Leicester Royal Infirmary, Infirmary Square, Leicester, LE1 5WW

E-mail: [enquiries@leicesterfertilitycentre.org.uk](mailto:enquiries@leicesterfertilitycentre.org.uk)  
[www.leicesterfertilitycentre.org.uk](http://www.leicesterfertilitycentre.org.uk)

## Consultants working within this Service

Mr G Thirthahalli - Consultant Gynaecologist  
 Mr T Gelbaya - Consultant Gynaecologist

## How to access this service

Referral Procedure - we treat both NHS and private patients. Leicester Fertility Centre is a provider of NHS funded IVF treatment to eligible patients within LLR.

Referral is via GP, hospital consultant or self referral for private patients. Private patients can be seen within 2 weeks for an initial appointment.

Patient information evenings are held monthly (last Thursday each month 7-8pm) or an informal visit to meet one of our nursing staff can be arranged.

## Service details

Established in 1988 and is one of the few fertility centres to employ gynaecologists who are also specially trained in infertility, reproductive endocrinology and andrology. As part of the UHL all necessary specialist back-up services can be provided and a professional team are able to offer service users immediate clinical advice five days a week. All care (including in-patient care if required) is provided by the same clinical team.

Private patient clinics are held at the Leicester Fertility Centre on Wednesday mornings and afternoons and Tuesday afternoons - and Saturday mornings.

## We are Human Fertilisation and Embryology Authority (HFEA) licensed for:

- Ovulation Induction (OI)
- Intrauterine Insemination (IUI)
- Donor Insemination (DI)
- Invitro Fertilization (IVF)
- Intracytoplasmic Sperm Injection (ICSI)
- Embryo Freezing & Frozen Embryo Transfer (FET)
- Egg Donation / Sharing
- Embryo Donation
- Sperm Donation
- Egg Freezing / Sperm Freezing including for oncology patients
- Surgical Sperm Retrieval
- Blastocyst Transfer
- Surrogacy

## Regional Andrology Service

Semen Analysis and diagnostic Andrology

### Opening times:

Monday - Friday 09.00 - 12 noon. Sample production and delivery instructions are available from the Centre or on Anglia ICE.

## Assisted Conception Services

### Opening Hours:

The Centre opens from 07:30 until 17:30 Monday, Wednesday and Friday, 09:00 - 17:00 Tuesday and Thursday and Saturday 08:00 - 12:00, with other weekend and bank holiday access and services as required. Outside of centre opening hours there is an answer phone for non urgent calls and a Specialist Fertility Nurse is available for out of hour's emergency contact 24 hours a day.

# Breast care services

**Clinical Head of Service:** Miss K. Valassiadou

**Main telephone numbers:**

- 2ww Team: Ext 0116 250 3377
- Breast Care Centre: 0116 250 2520
- Steve Peck - Service Manager:  
07930519736 / 0116 258 2643 / 7977
- Jacqueline Samuel - Waiting list Manager:  
0116 258 2643

**Main fax number:** 2ww Referrals: 0116 250 2777

**Site delivered from**

Glenfield Hospital

**Consultants working within this Service**

Miss K Valassiadou

Miss S Shokhui

Miss A Stotter

Mr J Krupa

Mr S Dzumhur

Miss F Kenney

**How to access this service**

Choose & Book / 2WW.

**Service details**

- 2ww Breast clinics for Symptomatic Breast, Male Breast & Young Breast.
- Nurse lead Seroma, Lymphoedema & Family History clinics.
- Clinic lead by Miss Stotter which benefits from Geriatrician & Anaesthetic support to review patients with increased co-morbidity & age.
- Procedures undertaken, Wide local excisions, Sentinel Lymph Node Biopsies, Excision biopsies, Excision of cysts & Fibroadenoma.
- Mastectomy & skin sparing Mastectomy
- Immediate reconstruction using implants & LD Flap Recon techniques.
- Combined Mastectomy & immediate recon with our LRI Plastic surgery dept using TRAM & DIEP Recon.
- Nipple reconstruction & Lipofilling
- Breast MDT
- Close working with Oncology, Radiotherapy & Chemotherapy depts
- Breast screening assessment clinics.

# Cardiac Investigations Department

**Clinical Head of Service Cardiology:** Dr J Kovac

**Pacing & Invasive Lead:** S Richardson

**Paediatric & Congenital Lead:** D Ip

**Echo & Non-Invasive Lead:** M Campton

**Main telephone number:**

• 0116 250 2944 • 0116 250 2913

**Main fax number:** 0116 250 2574

## Sites delivered from

Main department located at Glenfield Hospital

## Consultants working within this Service

Non directly

## How to access this service

**Please use the ECG proforma or send a referral letter along with the patient to:**

Cardiac Investigations Department

Sandringham Building, Level 1

Aylestone Road Entrance

Leicester Royal Infirmary

Leicester

LE1 5WW

Our Open-Access Clinic runs every morning,  
Mon-Fri, 9.15-12.00.

## Service details

Direct GP access to department only for  
ECG's & 24hr tapes.

All other investigations via UHL consultant referral.

# Cardiology services

**Clinical Head of Service:** Dr J Kovac

**Main telephone number:**

Appointments Office:

- 0116 258 3264
- 0116 258 3705
- 0116 258 3923

**Main fax number:** 0116 256 3375

**Site delivered from**

Glenfield Hospital

**Consultants working within this Service**

Dr J Kovac

Professor A Gershlick

Dr I Hudson

Dr D Chin

Dr A Ng

Dr R Pathmanathan

Dr P Stafford

Dr D Skehan

Professor N Samani

Dr G McCann

Dr G Richardson

Dr A Sandilands

Dr I Loke

Dr G Fancourt

Dr A Stanley

Professor I Squire

Professor L Ng

Dr J Davies

**How to access this service**

Choose & Book.

**Service details**

We have a Specialist Coronary Care Unit and specialist Cardiac Nurses. We also have a rapid access chest pain (RACP) service that provides a quick and early assessment by cardiologists of patients with suspected heart or chest pain.

We provide a comprehensive range of specialist services including planned and emergency services for adults and children requiring cardiac investigations and treatment. We treat patients with conditions including heart disease, heart attacks, heart valve problems, irregular heart rhythms and congenital disorders.

Interventional procedures – angiography, PCI (coronary angioplasty and stenting) for acute and chronic coronary artery disease, transcatheter therapies of valves and heart defects.

TAVI (Transcatheter Aortic Valve Insertion) - The technique allows heart valves to be implanted using a catheter which means patients don't need to have open heart surgery.

Electrophysiological Service including outpatient management of patients with Arrhythmia and heart rhythm disorders. Inpatient services include EPS (Electrophysiology Studies), cardiac ablation, pacemaker insertion, ICD (Implantable defibrillator) Implantation and Cardioversion.

Heart Failure - inpatient and outpatient service including Cardiac Rehabilitation.

The Syncope Service investigates people of all ages for "funny turns", dizziness, blackouts, falls, Postural Orthostatic Tachycardia Syndrome (POTS) and other autonomic neuropathies.

Referrals can be made directly via general practitioners and consultant teams. There is also an element of cross referral between the Syncope Service and the Cardiology/Ear Nose and Throat/Neurology consultants within the University Hospitals of Leicester.



# Chemical Pathology

**Clinical Head of Service:** Dr W Madira

**Main telephone number:**

Lab contacts Leicester Royal Infirmary:  
Dr W Madira / PA: 0116 258 6563 / 6550  
Registrars / Biochemists: 0116 258 6560  
Laboratory Manager: 0116 258 7267  
Results Enquiries: 0116 258 6531

**Main fax number:** 0116 258 6550

**Site delivered from**

Leicester Royal Infirmary  
Leicester General Hospital

**Consultants working within this Service**

Dr W Madira

**How to access this service**

Emergency services, Choose and Book,  
to Consultant by written referral as below:

**For Lipid Clinic address to:**

Dr W Madira or Dr M Tomaszewski  
Lipid Clinic  
Glenfield Hospital  
Integrated Medicine  
Groby Road  
Leicester, LE5 4PW  
Lipid Clinic Booking Clerk: 0116 258 3495  
Lipid Clinic Secretary: 0116 258 3029

**For Metabolic Bone Disease Clinic (MBDC) address to:**

Dr W Madira  
Metabolic Bone Disease Clinic  
Leicester Royal Infirmary  
Level 4, Sandringham Building  
Infirmary Square  
Leicester, LE1 5WW  
MBDC Booking Clerk: 0116 258 6809  
MBDC Secretary: 0116 258 6549

**For Daycase Biochemical / Dynamic Investigations address to:**

Dr W Madira  
Department of Chemical Pathology  
Leicester Royal Infirmary  
Level 4, Sandringham Building  
Infirmary Square  
Leicester, LE1 5WW  
Daycase Booking Clerk: 0116 258 5818  
Departmental Secretary: 0116 258 6550

**For Thyroid Register address to:**

Dr W Madira  
Leicester Royal Infirmary  
Level 4, Sandringham Building  
Infirmary Square  
Leicester, LE1 5WW  
Thyroid Register Booking Clerk: 0116 258 5202  
Departmental Secretary: 0116 258 6550

**For Lithium Register address to:**

Lithium Register  
Glenfield Hospital  
Groby Road  
Leicester, LE5 4PW  
Lithium Register Booking Clerk: 0116 258 3470

**Service details**

We offer a comprehensive analytical and interpretive service of complex and routine biochemical tests, as well as the following patient centred services:

- The Lipid Clinic at Glenfield Hospital - managing complex and difficult hyperlipidaemias.
- The Metabolic Bone Disease Clinic at Leicester Royal Infirmary - managing patients with various biochemical disorders involving bones.
- The Leicestershire Thyroid Register - monitoring treatment and compliance of patients with long term thyroid disorders.
- The Lithium Register - ensuring appropriate biochemical monitoring of patients on longterm Lithium replacement.

# Clinical Genetics

**Clinical Head of Service:** Dr P Vasudevan  
**Main telephone number:** 0116 2585736  
**Main fax number:** 0116 2586057

## Sites delivered from

Leicester Royal Infirmary & Coalville

## Consultants working within this Service

Dr J G Barwell  
Dr P Vasudevan  
Dr L Robertson (Locum)

## How to access this service

Clinical referrals are accepted from GPs, consultants, associate specialists, cancer family history clinics, antenatal services, and other health professionals.

## Referrals to be sent in writing using the following contact details:

Consultant in Clinical Genetics  
University Hospitals of Leicester  
Leicester Royal Infirmary  
Leicester, LE1 5WW  
Phone: 0116 258 5736  
Fax: 0116 258 6057

When we receive a referral letter in the department, after triaging and as appropriate, patients are sent an acknowledgement letter and an information leaflet that explains what to expect at a genetics clinic. Please ensure that a contact telephone number for the patient is provided with the referral.

## Service details

The Service is based at the Leicester Royal Infirmary site in a self-contained unit with clinical offices and outpatient facilities and integrated Cytogenetics laboratory. It offers clinics across UHL locations and at Coalville Community Hospital clinic. The new Clinical genetics out patient building located in the Victoria building at LRI has four clinics/consultation rooms and a separate waiting area. This creates a more comfortable environment for the families and makes it easier for patients to access the out patient department. It also allows parallel consultant, registrar and genetic counsellor clinics.

The service has strong links with the University Department of Genetics and there are other following research aspects.

## Genetics Education Networking for Innovation & Excellence

The link has been strengthened by successful bids for establishing microarray technology, Comprehensive Local Research Network and National Cancer Research Network badged research (including: Deciphering Developmental Disorders Study, DECIPHER, School of Biochemical & Chemical Sciences, Epidemiological Study of Familial Breast Cancer and Identification of Men with a genetic predisposition to Prostate Cancer, developing testing for Hereditary Non-Polyposis Colorectal Cancer in the East Midlands, a moderately increased familial cancer susceptibility clinic, breast screening with MRI.

The rapidly expanding Cancer Genetics Department includes breast, bowel, endocrinology, symptomatic and Neurofibromatosis Type 2 clinics. In the cancer genetics team we see individuals at an increased risk of cancer due to their family history. We look for multiple cases of cancer in multiple generations diagnosed under the age of 50.

# Clinical Haematology services

**Clinical Head of Service:** Dr B Kennedy

**Main telephone numbers:**

- Haematology Secretaries: 0116 258 6602
- Clinic Co-ordinators: 0116 258 6138
- Haemophilia Centre: 0116 258 6500
- Bone Marrow Transplant: 0116 258 5698

**Main fax number:** 0116 2585093

**Site delivered from**

Leicester Royal Infirmary

**Consultants working within this Service**

- **Dr D B J Kennedy** Head of Service, Consultant in lymphoproliferative disease
- **Dr S R Pavord** Consultant in Haemostasis and Thrombosis, Haemophilia Centre Director, Obstetric Haematology
- **Dr C S Chapman** Consultant - Haemoglobinopathy / Myeloma
- **Dr A E Hunter** Consultant - Bone Marrow Transplantation & Leukaemia
- **Dr H Qureshi** Consultant - Transfusion Medicine, Immunohaematology and myeloproliferative disease
- **Professor M J S Dyer** Professor of Haemato-oncology - Lymphoma
- **Dr S Wagner** Reader in Haematology, Lymphoma and Lymphoproliferative disorders
- **Dr M Garg** Consultant in Myeloma and General Haematology
- **Dr M Martin** Consultant in Leukaemia and Bone marrow transplantation
- **Dr F Miall** Consultant in Lymphoproliferative disease and Medical Education
- **Vacant post** Acute Leukaemia, Myelodysplasia, Bone Marrow Transplantation
- **Dr L Barton** Consultant Haematologist, Head of Laboratory
- **Dr W Abd-Elghany** Paediatric Haematology Consultant
- **Dr J Strong** Consultant in Haemostasis and Thrombosis
- **Dr P Mensah** Associate Specialist in Haemostasis and Thrombosis
- **Dr G Asagba** Associate Specialist in General and Laboratory Haematology

**How to access this service**

- Choose & Book
- 2WW pathway
- Routine referrals
- Referrals picked up via the laboratory.

**Service details**

- Situated in the Osborne Building, at the Leicester Royal Infirmary
- 22 in-patient beds, 5 bedded assessment unit for all oncological and haematological emergencies
- Day care area for diagnostic testing (Bone Marrow Aspirate/Trephine, Lumbar punctures) and treatments (apheresis service, chemotherapy, blood transfusions, Venesections, bisphosphonate infusions etc).
- Comprehensive Care Centre for Haemostasis and Thrombosis - adult and paediatric
- HMDL laboratory facility for Leicestershire and Northamptonshire
- 5 bedded Transplant Unit situated in the Windsor Building at the Leicester Royal Infirmary.

For patients aged 19-24 years inclusive please refer to East Midlands Teenage and Young Adults Integrated Cancer Service.

# Contraception, sexual and reproductive health services

**Clinical Head of Service:** Dr E Oloto  
**Main telephone number:** 0116 2951212  
**Main fax number:** 0116 2951233

## Sites delivered from

Services are Community-based and delivered from eight sites in a 'hub and spoke' arrangement. The hub is at St. Peters Health Centre in Leicester.

The spokes are: Young people clinic currently at Beaumont Leys Health Centre and other peripheral clinics currently in Coalville Community Hospital, Hinckley Health Centre, Loughborough Hospital, Market Harborough District Hospital, Melton, and St Mary's Hospital.

## Consultants working within this Service

Dr E Oloto  
 Dr J Herrick  
 Dr A Prasad  
 Dr I Patchett

## How to access this service

**Please refer to 'Choose and Book' and to the 'Care Pathway' below for instructions on how to access specific services.**

Our walk-in clinics are run on a drop-in basis, there is no appointment necessary. These clinics are usually very busy and patients may have to wait a while before being seen. There are a maximum number of patients we can see in any one session and any patient not seen at the time will be offered an appointment or advised to attend the next walk-in session.

## Treatment and services offered:

- All forms of Reversible Contraception
- Combined contraceptive pill
- Combined Vaginal Ring (NuvaRing)
- Condoms (male and female)
- Contraceptive implants and injections
- Contraceptive patch

- Diaphragms and Caps
- Intrauterine devices (IUDs)
- Intrauterine System (IUS or Mirena)
- Also Mirena insertion for non-contraceptive reasons
- Progestogen-only pills
- Non-Reversible Contraception
- Sterilisation counselling
- Vasectomy counselling
- Vasectomy Surgery
- Complex Contraception Service
- Specialist advice about contraception and sexual health
- Management of hormonal contraceptive problems
- 'One stop clinic' for Management of missing IUD/S threads
- Ultrasound scan and ultrasound-guided removal of IUD/S
- Ultrasound-guided IUD/S insertion for difficult cases
- Ultrasound-guided removal of deeply sited or impalpable contraceptive Implants
- Psychosexual services
- STI Screening and treatment (except HIV treatment)
- Counselling service prior to and following termination of pregnancy
- Termination of pregnancy assessment service, including ultrasound scanning
- Cervical screening
- Training for Nurses and Doctors: Diploma, LoC IUT, LoC SDI, LoC MED

# Cystic Fibrosis - children's

**Clinical Head of Service:** Dr E Gaillard

**Service Manager:** Mr N Kirk

**Main telephone number:** 0116 258 5970

**Main fax number:** 0116 258 7637

## Site delivered from

Leicester Royal Infirmary

## Consultants working within this Service

Dr E Gaillard

## How to access this service

### Paper referral to:

Childrens Hospital Referrals Management Team  
Childrens Admin Centre  
Leicester Royal Infirmary  
Infirmary Square  
Leicester LE1 5WW

Or by fax to number above.

Emergency access via assessment unit or ED.

## Service details

- Inpatient, Day case & out patient services
- Specialist Nurse
- Outreach to Kettering.



# Cytogenetics

**Clinical Head of Service:** Lara Cresswell

**Main telephone number:** 0116 258 5637

**Main fax number:** 0116 258 5576

## Sites delivered from

Leicester Royal Infirmary

## Consultants working within this Service

Clinical Scientist led service

Contact head of service for clinical advice.

## How to access this service

Laboratory service, samples are referred using normal pathology sample collection service.

## Service details

Chromosome analysis

Please note: electronic requesting is not available for this service.

# Dermatology services

**Clinical Head of Service:** Dr G Johnston

**Main telephone number:**

Leicester Royal Infirmary - 0116 2586179

Leicester General Hospital - 0116 2584442

**Main fax number:**

Leicester Royal Infirmary - 0116 2586792

Leicester General Hospital - 0116 2584926

**Site delivered from**

Leicester Royal Infirmary

Leicester General Hospital

**Consultants working within this Service**

Dr A Alexandrov

Dr D J McKenna

Dr G A Johnston

Dr I Helbling

Dr R Burd

Dr R Graham-Brown

Dr K E Harman

**How to access to this service**

Choose and Book, Urgent appointments via registrar on call and 2www.

**Paper Referrals are also accepted at:**

Leicester General Hospital

OPD1 Back Office

Gwendolen Road

Leicester LE5 4PW

Leicester Royal Infirmary

Dermatology Dept

Clinic 3

Level 1

Balmoral Building

Infirmary Square

Leicester LE1 5WW

**Service details:**

**The Majority of the Dermatology Clinics are held at the Leicester Royal Infirmary. The department specialises in:**

- Dermatological Surgery
- Patch Tests for allergies (does not include Food)

- UVA,UVB and PUVA light treatments,
- Steroid injections
- Advanced MOHS surgery, which allows the MOHS surgeon to make a direct clinical pathological link as the excised tissue is examined under the microscope whilst the patient is in the dermatology Department
- Dermoscopy is non invasive examination to detect early Melanoma
- Alopecia
- General Dermatology
- Acne Clinics led by Nurse Specialist
- Chronic Disease
- Iontophoresis PDT
- Mycosisfungoides
- Infliximab which are carried out as Day Case on the Odames Ward
- Paediatric procedures for patients under 16 are carried out on Ward 11
- 2 Week Wait Cancer Clinics.

**There are Satellite clinics at:**

- Leicester General Hospital
- Loughborough (General Dermatology)
- Coalville (General Dermatology)
- Hinckley (General Dermatology)
- Ashby (General Dermatology)
- Market Harborough (General Dermatology)
- Oakham (General Dermatology).

**Nurse Led Clinics are also held in the community which are managed by UHL (Adults and Paediatric).**

**These are held in:**

- Braunstone Health and Social Centre
- Merlin Vaz
- Humberstone Medical Centre

The department actively participates in research and recruits to large number of National Clinical Studies ensuring patients receive the newest and most advanced treatments.

# Dermatology - Children's

**Clinical Head of Service:** Dr R G Brown

**Main telephone number:** 0116 258 5970

**Main fax number:** 0116 258 7637

## Site delivered from

Leicester Royal Infirmary

## Consultants working within this Service

Dr R G Brown

Dr I Helbling

## How to access this service

Choose & Book or via paper referral to:

Childrens Hospital Referrals Management Team

Childrens Admin Centre

Leicester Royal Infirmary

Infirmery Square

Leicester LE1 5WW

Or by fax to number above.

## Service details

- Inpatient & Out patient services
- Skin biopsy clinic.

# Diabetes, Endocrinology and metabolic medicine services

**Clinical Head of Service:** Dr R Gregory

**Main telephone number:**

Leicester Royal Infirmary - 0116 258 5964

Leicester Royal Infirmary - 0116 258 5620

Leicester General Hospital - 0116 258 4409

**Main fax number:**

Leicester Royal Infirmary - 0116 258 5449

Leicester General Hospital - 0116 258 4926

**Site delivered from**

Leicester Royal Infirmary

Leicester General Hospital

Glenfield Hospital

**Consultants working within this Service**

Dr M Kong

Dr S Jackson

Dr A Gallagher

Dr H K Gleeson

Dr I G Lawrence

Prof M J Davies

Dr M Levy

Dr P G McNally

Dr S Shenoy

Dr T Howlett

Dr K Higgins

Dr R K M Wong

**How to access this service**

Emergency services, Choose and Book. Written referral to Diabetes Consultant at the following addresses:

Leicester General Hospital

OPD1 Back Office

Gwendolen Road

Leicester LE5 4PW

Leicester Royal Infirmary

Metabolic Clinic Co-ordinator Office

Room 6, Level 2

Victoria Building, Infirmary Square

Leicester LE1 5WW

**Service Details**

The department of Diabetes and Endocrinology are part of the Acute Medicine and A&E services. The team aims to provide a wide range of services for people with diabetes of all ages and their carers, as well as provide training, resources and support for multidisciplinary staff across primary and secondary care in caring for people with diabetes.

Our Multidisciplinary Diabetes team is probably the largest in England. The Diabetes team consists of Consultant Physicians, Nurse Consultants, Matron, Diabetes Specialist Nurses (DSN), Specialist Registrars, Dietitian, Pharmacists, Foot Specialists, Diabetes Educators, Endocrinologists, and Admin Staff.

The multidisciplinary team works across all three hospital sites and in the community. They provide a comprehensive service to patients in our diabetic clinics including retinopathy screening. Outpatient service to include a dedicated diabetic foot clinic, diabetes education groups, insulin initiation groups, individual nurse led clinics, diabetes dieticians, specialist diabetes education programmes, DEMOND, DAFNE.

**Education around Diabetes for patients and carers within UHL.**

- Diabetes Management Advise
- Diabetes Education Groups
- Group Insulin Initiation
- Insulin pump Therapy
- Combined Renal Clinics
- Specialist Eye Care
- Nurse led clinics
- Antenatal Advise for pregnancy

The integrated Community Diabetes service (ICDS) provided by the UHL started in April 2010. Care will be provided closer to home for patients who have poor control of their diabetes through eight community based clinics. This will mean patients who previously attended hospital as an outpatient will instead, where appropriate, be able to receive specialist care at health centre's and medical practises.

**Clinic locations**

- Manor Medical Centre
- Westcotes Health Centre
- Braunstone Health and social Care Centre
- The hedges Medical Centre
- Springfield Road Health Centre
- The Merlyn Vaz Health and Social Centre
- Diabetes Care, Leicester General Hospital
- Rushey Mead Health Centre

**Consultant Led Community Clinics**

- Braunstone - Dr Jackson
- Coalville - Dr Gregory
- Hinckley - Dr McNally
- Loughborough - Dr Jackson
- Melton Mowbray - Dr Gregory
- Market Harborough - Dr Alison Gallagher
- Oakham - Dr Paul McNally

<http://www.endoLeicesterRoyalInfirmary.org.uk/>

# Diabetes - Children's

**Clinical Head of Service:** Dr J Greening

**Main telephone number:** 0116 258 5970

**Main fax number:** 0116 258 7637

## Site delivered from

Leicester Royal Infirmary and locality clinics

## Consultants working within this Service

Dr J Greening

Dr M Balapatabendi (locum)

## How to access this service

ED or Children's Assessment Unit

## Service details

- Inpatient and outpatient services
- Specialist nurses and Dieticians
- Annual reviews
- Insulin pumps.



# Ear, nose and throat services

## Clinical Head of Service:

Professor H Pau - Consultant ENT Surgeon

## Main telephone number:

ENT Medical Secretary Office

- 0116 258 7656
- 0116 258 7542
- 0116 258 5643
- 0116 258 6021

Hearing Services

Reception - 0116 258 5824

Secretary - 0116 258 6075

Administration Manager - 0116 258 7289

Administration Team Leader - 0116 258 7911

Referrals Management Office (new outpatient referrals)  
0116 258 6716

Waiting List Office (additions to inpatient /  
day-case waiting list)

Inpatient & day-case - 0116 258 6058

Day ward - 0116 258 5420

**Main fax number:** 0116 258 7860

## Site delivered from

Leicester Royal Infirmary

## Consultants working within this Service

Mr T Alun-Jones, Consultant ENT Surgeon (Head & Neck)

Mr A Banerjee, Consultant ENT Surgeon (Otology)

Mr P Conboy, Consultant ENT Surgeon (Head & Neck)

Mr G Murty, Consultant ENT Surgeon  
(Paediatric & Laryngology)

Prof H Pau, Consultant ENT Surgeon  
(Otology and paediatric airways  
research and teaching)

Mr P Rea, Consultant ENT Surgeon  
(Otology and paediatric airways)

## Associate Specialists

Ms I Frain

Mr K Ali

## Staff Grade

Mr S Das

## How to access this service

Referrals to the department are accepted via  
Choose & Book and the 2ww office.

## Service details

The Department provides the following:

- General ENT
- Head and Neck Services
- Otology
- Balance Services

The team support ENT clinics in Loughborough, Melton  
Mowbray, Oakham, Market Harborough, Hinckley,  
Coalville, and Ashby community hospitals.

# East Midlands Teenage and Young Adults Integrated Cancer Service

**Clinical Head of Service:**

Dr Emma Ross

**Main telephone number:**

0116 258 5959

**Main fax number:**

0116 258 5309

**Site delivered from**

Leicester Royal Infirmary

**Consultants working within this Service**

Both Paediatric and Adult Consultants for Haematology and Cancer.

**Key Contacts**

Dr Emma Ross, Teenage/Young Adults Cancer Lead Clinician, Consultant Paediatric Oncologist

Dr Johannes Visser, CYPICS Lead Clinician, Consultant Paediatric Oncologist

Dr Fiona Miall, Consultant Haematologist

Dr Claire Esler, Consultant Clinical Oncologist.

**Service details**

A collaborative Principal Treatment Centre between University Hospitals of Leicester and Nottingham University Hospitals providing a specialist age specific medical and psychosocial care for cancer patients aged 13-24 years regardless of geographical location. Patients aged 19 years to the end of their 24th year will have the choice option to either be treated locally at Community hospitals (approved through network care) or to be treated at the Principal Treatment Centre. Patients aged 0-18 will be treated at the Principal Treatment Centre.

Leicester Royal Infirmary provides age appropriate facilities within the Windsor Building, Ward 27. There are 5 dedicated beds for patients aged 13-24 years including social space, quiet area, and access to a dedicated teenage/young adults trained support team and a weekly multi-disciplinary team meeting.

**How to access this service**

Access to the service is available on confirmation of a cancer diagnosis via internal processes and Community hospitals. GPs are able to contact the centre for advice, training, to meet the team and view the facilities, not to directly refer patients.

# Elective Orthopaedics service (Adult)

## Clinical Head of Service:

Mr A Ullah

**Main telephone number:** 0116 258 4723

**Main fax number:**  
Leicester General Hospital: 0116 25 88111  
Glenfield Hospital: 0116 258 3063

## Sites delivered from

Leicester General  
Mr M Bhatia  
Mr J Mangwani

## Spine

Mr J Braybrooke  
Mr O Gabbar  
Mr M Newey  
Mr P Sell

## Upper Limb (Shoulder / Hand and Wrist)

Miss A Armstrong  
Mr B Bhowal  
Miss L Cutler  
Prof. J Dias  
Mr A Modi  
Mr R Pandey  
Mr G Taylor  
Mr A Ullah  
Miss C Wildin

Hospital (outpatients, pre assessment and theatres).

Glenfield Hospital (outpatients and pre assessment only).

## Consultants working within this Service

### Foot & Ankle

Miss P E Allen

Mr A Best

### Lower Limb (Hip & Knee, including Revision Surgery)

Mr R Ashford

Mr S Birtwhistle

Mr K Boyd

Mr A Brown

Mr U Chatterji

Mr J Davison

Mr C Esler

Mr S Godsiff

Mr T Green

Mr C Kershaw

Mr A Kulkarni

Mr R Power

Mr S Tandon

Mr S Williams

Mr P Pathak (Associate Specialist)

Mr L Spaine (Associate Specialist)

### Sarcoma Service

Mr R Ashford.

## How to access this service

Referral via Choose and Book.

## Paper referrals to be sent to:

Orthopaedic Admin Leicester General Hospital Gwendolen Road Leicester LE5 4PW	Orthopaedic Admin Glenfield Hospital Groby Road Leicester LE3 9QP
--	--

## Service details

Our outpatient service is provided at both the Glenfield and Leicester General Hospital.

The Sarcoma service is based at Leicester Royal Infirmary.

The following sub-specialties are provided at each site within outpatients.

- Spine & Lower Back - Leicester General Hospital only.
- Hip & Knee - Leicester General Hospital and Glenfield Hospital.
- Hand & Wrist - Glenfield Hospital mainly, Carpal Tunnel Service is based at Leicester General Hospital.
- Foot & Ankle - Leicester General Hospital.
- Shoulder & Elbow - Leicester General Hospital and Glenfield Hospital.

Since January 2012 all surgery is now undertaken on Leicester General Hospital site within seven operating theatres. Four new theatres were opened in 2011 and two further theatres have been refurbished and reopened at the beginning of 2012.

Some minor procedures including carpal tunnels, knee arthroscopies & injections will be undertaken in a clean treatment room environment.

We have three dedicated inpatient wards at Leicester General Hospital and an admissions / day case ward.

# Emergency Department

**Clinical Head of Service:** Dr B Teasdale  
**Main telephone number:** 0116 258 5645  
**Main fax number:** 0116 204 7935

## Sites delivered from

Leicester Royal Infirmary

## Consultants working within this Service

### Clinical business unit Clinical Lead

Dr B Teasdale

### CBU Associate Clinical Leads

Mr J Banerjee

Dr M Marathe

Dr Colin Read

### Professor of Emergency Medicine

Professor T Coats

### Consultants

Dr F Davies

Dr R Wright

Mr M Wiese

Mr A Kumar

Dr M Williams

Dr J Acheson

Dr S Jones

Dr P Mukherjee

Dr V Pillai

## How to access this service

Not applicable.

## Service details

Emergency Department for Leicester and Rutland dealing with all type 1 attendances. The Department has several distinct areas dealing with patients who present with minor injury through to complex trauma.

- Majors
- Minors
- Childrens
- Resus.

# Endocrinology - Children's

**Clinical Head of Service:** Dr S Shenoy  
**Main telephone number:** 0116 258 5970  
**Main fax number:** 0116 258 7637

**Site delivered from**  
Leicester Royal Infirmary

**Consultants working within this Service**  
Dr J Greening  
Dr S Shenoy  
Dr M Balapatabendi (locum)

## **How to access this service**

### **Choose & Book or paper referral to:**

Childrens Hospital Referrals Management Team  
Childrens Admin Centre  
Leicester Royal Infirmary  
Infirmary Square  
Leicester LE1 5WW

Or by fax to number above.

## **Service details**

- Inpatient & Out patient services
- Specialist nurse
- Home growth hormone treatment.

# Fracture Clinic

**Clinical Head of Service:**

Mr J Braybrooke - Consultant Surgeon

**Main telephone number:** Liaison Desk - 2585430

**Main fax number:** 2585430

**Site delivered from**

Leicester Royal Infirmary

**Consultants working within this Service**

Mr A Abraham	Mr O Gabbar
Mr N Adla	Mr S Godsiff
Miss A Armstrong	Mr A Kulkarni
Mr A Best	Mr J Mangwani
Mr M Bhatia	Mr A Modi
Mr B Bhowal	Mr M Newey
Mr J Braybrooke	Mr R Pandey
Mr A Brown	Mr P Sell
Mr U Chatterji	Mr S Tandon
Miss L Cutler	Miss C Wildin
Mr J Davison	Mr S Williams
Mr C Esler	Mr A Ullah
Mr A Furlong	

**How to access this service**

Please contact the Orthopaedic Registrar on-call via Switchboard, or patients with referrals from their GP should contact the Liaison Desk (telephone number above) to arrange a suitable appointment within a Nurse Led clinic.

**Service details**

The Fracture Clinic is based on Level 1 of the Balmoral Building at the Leicester Royal Infirmary and provides an outpatient service for both children and adults, following an orthopaedic injury.

Patients can be referred to this clinic by their GP, or they may be sent here following an attendance at either the Emergency Department, Walk in Centre or different centre. There are Orthopaedic Trauma Nurse Practitioners based here who run special clinics to review patients with fractures. Patients may be referred for more specialist treatment, if appropriate, after an initial appointment with a Doctor or Nurse.

The Fracture clinic service operates on an appointment only basis.

**The Fracture clinic’s opening hours are as follows:**

Monday to Friday	8 am to 9 pm
Saturday and Sunday	8 am to 2 pm.

# Gastroenterology

**Clinical Head of Service:** Dr A Grant

**Main telephone number:**

• 0116 258 5894 • 0116 258 7526

**Main fax number:**

Leicester Royal Infirmary: 0116 258 4926

Leicester General Hospital: 0116 258 6985

## Sites delivered from

Leicester Royal Infirmary and Leicester General Hospital

## Consultants working within this Service

### Leicester General Hospital

- Dr J Decasteacker
- Dr R Robinson
- Prof J Mayberry
- Dr S Shah

### Leicester Royal Infirmary

- Dr P Wurm
- Dr B Rathbone
- Dr J Stewart
- Prof J Janowski

## How to access this service

Choose and Book.

## Service details

The Digestive Diseases Centre in Leicester is one of the largest clinical gastroenterology research centres in the UK.

The Centre is staffed by a team with wide expertise in the fields of genetics, biochemistry, mutagenesis and pharmacology. They provide a range of services for patients requiring intestinal and gastroenterological treatment for stomach problems.

Gastroenterology clinics are held for a range of conditions including colitis, liver, rectal bleed and follow up cancer clinics.

## Other procedures also carried out include:

- Colonscopies and flexible sigmoidoscopes
- Transoesophageal echo scans (TOES)
- Hydrogen breath tests
- Liver biopsies.

Leicester Royal Infirmary has a purpose-built endoscopy unit, with up-to-date video equipment, carrying out all forms of diagnostic and therapeutic endoscopy. Leicester General Hospital has a modern multi-room endoscopy suite with X ray screening facilities in the nearby X ray department.



# Gastroenterology - Children's

**Clinical Head of Service:** Dr M Green  
**Main telephone number:** 01162585970  
**Main fax number:** 0116 2587637

## Site delivered from

Leicester Royal Infirmary

## Consultants working within this Service

Dr M Green  
Dr D Rutter  
Dr A Willmott

## How to access this service

### Choose & Book or paper referral to:

Childrens Hospital Referrals Management Team  
Childrens Admin Centre  
Leicester Royal Infirmary  
Infirmary Square  
Leicester LE1 5WW

Or by fax to number above.

## Service details

- Inpatient & Out patient services
- Coeliac clinics
- Endoscopy for diagnosis and monitoring
- Inflammatory bowel disease
- Gut related food allergy.

# General and Colorectal surgery

## Clinical Head of Service:

Mr A Miller - Leicester Royal Infirmary

Mr J Jameson - Leicester General Hospital

**Main telephone number:** 0116 2586716

## Main fax number:

Leicester Royal Infirmary: 0116 204 7860

Leicester General Hospital: 0116 258 3257

## Sites delivered from

Leicester Royal Infirmary and Leicester General Hospital

## Consultants working within this Service

### Leicester Royal Infirmary

- Mr A Miller
- Mr D Hemingway
- Miss K Boyle
- Mr M Norwood
- Mr J Yeung

### Leicester General Hospital

- Mr J Jameson
- Mr A Scott
- Mr M Thomas
- Mr S Chaudhri
- Mr B Singh

## How to access this service

Choose and Book.

## Service details

We have both an adult and children's general surgery service. Treatments and services offered at the General surgery department:

- Anaemia
- Anal fissure
- Anal fistula
- Aneurysm
- Angiography
- Breast abscess
- Cancer of the oesophagus
- Cancer of the prostate
- Cancer of the stomach
- Cancer of the thyroid
- Diagnostic endoscopy of the stomach
- Eczema (varicose)
- Endoscopy
- Gallbladder surgery
- Gallstones
- General Surgery
- Hernia inguinal
- Peritonitis
- Pilonidal sinus
- Repair of abdominal aortic aneurysm
- Repair of femoral hernia
- Repair of inguinal hernia
- Repair of umbilical hernia
- Surgery for haemorrhoids
- Therapeutic endoscopy on the stomach
- Thyroid over-active
- Varicose vein stripping
- Vasectomy.

# General Medicine - Children's

**Clinical Head of Service:** Vacant

**Service Manager:** Mr N Kirk

**Main telephone number:** 0116 258 5970

**Main fax number:** 0116 258 7637

## Site delivered from

Leicester Royal Infirmary

## Consultants working within this Service

Dr J Forster

Dr C Wighton

Dr S Bandi

Dr A Shridar

Dr W Hoskyns

## How to access this service

**Referral via choose and book.**

**Paper referrals please post to:**

Childrens Hospital Referrals Management Team

Childrens Admin Centre

Leicester Royal Infirmary

Infirmary Square

Leicester LE1 5WW or fax to 0116 258 7637

## Service details

- Inpatient and Outpatients Services.
- Emergencies via Childrens Assessment Unit (Contact Unit First via on call or 0116 258 6916).
- Rapid Access Clinics (for admission avoidance) VIA Telephone Call to CAU.

# General Paediatric Respiratory Medicine

**Clinical Head of Service:** VACANT

**Service Manager:** Mr N Kirk

**Main telephone number:** 0116 258 5970

**Main fax number:** 0116 258 7637

## Site delivered from

Leicester Royal Infirmary

## Consultants working within this Service

Dr D Luyt

Dr H Pandya

Dr E Gaillard

Dr W Hoskyns

## How to access this service

### Choose and book or paper referral to:

Childrens Hospital Referrals Management Team

Childrens Admin Centre

Leicester Royal Infirmary

Infirmary Square

Leicester LE1 5WW

Or by fax to number above.

Emergency access through assessment unit or ED.

## Service details

- Inpatient, Day case & out patient services
- General respiratory
- Asthma
- Chronic conditions
- Long Term Ventilation
- Bronchoscopy.

# Gynaecology services

## Clinical Head of Service: Vacant Post :

Mr I Scudamore: Women's CBU Lead

## Main telephone number:

Leicester Royal Infirmary, Emergency & Early Pregnancy Assessment: 0116 258 6836

Leicester General Hospital,  
Elective admissions: 0116 258 4821

## Main fax number:

Leicester Royal Infirmary: 0116 258 6961

Leicester General Hospital: 0116 273 5788

## Site delivered from

- Leicester Royal Infirmary
- Leicester General Hospital

## Consultants working within this Service

### Leicester Royal Infirmary

Professor J Konje	Miss C Ang
Dr A Akkad	Mr Q Davies
Mr M Habiba	Dr C Wiesender
Mr F Al-Azzawi	Miss J Elson
Mr R de Chazal	Mr T Gelbaya
Dr R Aravindan	Mr T Girish
Mr J Emembolu	
Mr R Teo	

### Leicester General Hospital

Mr D Tincello	Miss A Matiluko
Mr C Mayne	Ms A Doshani
Mr P Kirwan	Mr I Scudamore
Dr T Singhal	

## How to access this service

Choose and book.

## Postal referral:

Gynaecology department Leicester Royal Infirmary Infirmary Square LE1 5WW	Gynaecology department Leicester General Hospital Gwendolen Road Leicester LE5 4PW
--	--

For suspected cancer the 2 week wait urgent fax referral

NB: For any complex patient that requires discussion urgently, ring switchboard and ask for the 'Gynaecology red phone number' to speak to the consultant on call for Gynaecology direct.

## Service details

All services Gynaecology are described in the published, directory of services within the choose and book system.

There are sub-specialists in the following disciplines:

- Gynaecology Oncology
- Reproductive Medicine
- Urogynaecology
- Sexual and Reproductive Health

Gynaecology services offers outpatient, diagnostic, therapeutic ( outpatient and elective) and emergency services for patients to access. The Leicester Royal Infirmary is the regional training centre for gynaecological ultrasound.

## Service changes: From April 2012

- All elective surgery will be undertaken at the Leicester General Hospital. This will be supported by the gynaecology theatre moves and the opening of a Day of Surgery Arrivals area (DOSA) on Ward 11.
- Ward 31 at the General will change to serve post surgical patients.
- Surgical Pre-operative Assessment, a nurse led service, will be centralised within the Gynaecology Services Unit (GSU) at the Leicester General Hospital.
- Emergency activity will be centralised at the Royal on the Gynae Assessment Unit (GAU) Level 1 Kensington, Leicester Royal Infirmary.
- The Early Pregnancy Assessment Service (EPAU) will be a centralised nurse led service in a discreet unit on the Ground Floor, Jarvis Building, Leicester Royal Infirmary.

Changes will be in place from 10th April. The separation of elective and emergency pathways will benefit our patients in a number of ways including:

- Improved facilities and environment for patients
- Reduction in admissions, length of stay, cancellations and delays for patients
- Provide a one stop service for women who are suffering problems in early pregnancy
- Provide appropriate nurse led services that improves patient access to all our services
- Increase access to ambulatory gynaecology care and treatment

# Haematology - Children's

**Clinical Head of Service:** VACANT

**Service Manager:** Tina Clegg

**Main telephone number:** 0116 258 5970

**Main fax number:** 0116 258 7637

## Site delivered from

Leicester Royal Infirmary

## Consultants working within this Service

VACANT

## How to access this service

**Choose & Book or via paper referral to:**

Childrens Hospital Referrals Management Team  
Childrens Admin Centre  
Leicester Royal Infirmary  
Infirmary Square  
Leicester LE1 5WW

Or by fax to number above.

## Service details

- Inpatient & Out patient services
- Annual reviews
- Doppler scanning clinics.

# Heptobiliary services

**Clinical Head of Service:** Mr J Jameson  
**Main telephone number:** 0116 258 8110  
**Main fax number:** 0116 2583257

## Sites delivered from

Leicester General Hospital

## Consultants working within this Service

- Mr A Dennison
- Mr M Metcalfe
- Mr D Lloyd
- Mr G Robertson
- Mr G Garcea

## How to access this service

Choose and Book.

## Service details

Outpatient, elective and daycase based at Leicester General Hospital. Emergency service at Leicester General Hospital and Glenfield Hospital.



# Hepatology

**Clinical Head of Service:** Dr A Grant

**Main telephone number:**

Leicester Royal Infirmary 0116 258 5894

Leicester General Hospital 0116 258 7526

**Main fax number:**

Leicester Royal Infirmary 0116 258 4926

Leicester General Hospital 0116 258 6985

**Sites delivered from**

Leicester General Hospital and Leicester Royal Infirmary

**Consultants working within this Service**

- Dr A Grant
- Dr T Delahooke

**How to access this service**

Choose and Book and paper referrals.

**Service details**

Outpatient service for patients with Liver related diseases.

## HIV - Children's

**Clinical Head of Service:** Dr M Green

**Service Manager:** Tina Clegg

**Main telephone number:** 0116 258 5970

**Main fax number:** 0116 258 7637

**Site delivered from**

Leicester Royal Infirmary

**Consultants working within this Service**

Dr M Green

Dr Bandi

**How to access this service**

Choose & Book, Adult service seeing parents.

**Service details**

Inpatient & Out patient services

Family Clinic.

# Hypertension

**Clinical Head of Service:** Dr Conroy

**Main telephone number:** 0116 258 6018

**Main fax number:** 0116 258 5449

## Site delivered from

Leicester Royal Infirmary

## Consultants working within this Service

Dr A. G. Stanley - Hypertension

Prof B. Williams - Hypertension

Dr M. Tomaszewski - Hypertension

## How to access this service

### via choose and book or paper referral to:

Metabolic clinic co-ordinator office

Room 6

Level 1

Victoria building

Leicester Royal Infirmary

LE1 5WW

## Service details

The Hypertension service provides:

- Consultant led clinics
- Nurse led clinics
- Specialist advice on high blood pressure in pregnancy
- Informal information and support sessions for patients
- Lifestyle advice and goal setting based on the latest research
- Access to specialist investigations
- Access to specialist investigations including:
  - 24 hour blood pressure monitoring
  - ECG
  - echocardiogram
  - renal ultrasound
  - renogram/captopril renogram
  - renin/aldosterone
  - urinary drug assays
  - urinary catecholamines.

# Imaging and medical physics

**Clinical Head of Service:** Dr C Reek  
**Main telephone number:** 0116 258 3689  
**Main fax number:** 0116 256 3243

## Sites delivered from

All three hospital sites.

## Consultants working within this Service

### Vascular

- Dr Adair - Leicester Royal Infirmary
- Dr Blanshard - Leicester General Hospital
- Dr Bolia - Leicester Royal Infirmary
- Dr Bruce - Leicester General Hospital
- Dr Fishwick - Leicester Royal Infirmary
- Dr Glasby - Leicester Royal Infirmary

### Cardio

- Dr Keal - Glenfield Hospital
- Dr Pakkal - Glenfield Hospital
- Dr Raj - Glenfield Hospital
- Dr Reek - Glenfield Hospital

### Chest

- Dr Bajaj - Glenfield Hospital
- Dr Maskell - Glenfield Hospital
- Dr Barnes - Glenfield Hospital

### Paediatrics

- Dr Dickinson - Leicester Royal Infirmary
- Dr Dux - Leicester Royal Infirmary
- Dr Maniyar - Leicester Royal Infirmary
- Dr Rickett - Leicester Royal Infirmary

### ONC/GI

- Dr Kenningham - Leicester Royal Infirmary
- Dr Rajesh - Leicester General Hospital

### Oncology

- Dr Griffin - Leicester Royal Infirmary
- Dr Morgan - Leicester Royal Infirmary
- Dr Mulcahy - Leicester General Hospital
- Dr Tyagi - Leicester Royal Infirmary

### GI/GU

- Dr Campbell - Leicester Royal Infirmary
- Dr Elabassy - Leicester Royal Infirmary
- Dr Newland - Leicester General Hospital
- Dr Rees - Leicester General Hospital
- Dr Rodgers - Leicester Royal Infirmary
- Dr Verma - Leicester Royal Infirmary
- Dr Shah - Leicester Royal Infirmary

### MSK

- Dr Gaba - Leicester Royal Infirmary
- Dr Jeyapalan - Glenfield Hospital
- Dr Rennie - Leicester Royal Infirmary

### Neuro

- Dr Cherryman - Leicester General Hospital
- Dr Harieaswar - Leicester Royal Infirmary
- Dr Kathuria - Leicester Royal Infirmary
- Dr Khan - Leicester General Hospital
- Dr Morlese - Leicester Royal Infirmary
- Dr Vaidhyanath - Leicester Royal Infirmary

### Breast

- Dr Al Attar - Glenfield Hospital
- Dr Denton - Glenfield Hospital
- Dr Grosvenor - Glenfield Hospital
- Dr Khan - Glenfield Hospital
- Dr Lister - Glenfield Hospital
- Dr McDonald - Glenfield Hospital

## How to access this service

Electronic requesting via the ICE system.

## Service details

Services are provided in all the main specialties and services. This includes services for both adults and paediatrics.

UHL delivers all subspecialty services including stress cardiac MR, vascular and renal interventional radiology and forensic CT.

The modalities covered by UHL are listed below. All services (except Breast Imaging and Nuclear Medicine) operate on a 24-7 basis depending on clinical urgency.

Normal hours of service are listed below.

### Plain Film Imaging:

- GP open access service provided at Glenfield Hospital 8.30 - 4.30 Monday - Friday
- GP minor trauma - open access at Leicester Royal Infirmary 8.30 - 4.30 Monday - Friday
- GP paediatrics - by appointment at Leicester Royal Infirmary 8.30 - 4.30 Monday - Friday
- Appointments can be arranged if required: 0116 258 8765

# Imaging and medical physics continued

## Ultrasound

By appointment 9am - 5pm Mon - Fri.  
All UHL sites, telephone: 0116 258 8765.

The absence of ionising radiation makes ultrasound (US) the primary investigation for a range of clinical conditions. Technological advances have served to extend still further clinical applications of US and have been reflected in a sustained increase in demand for US imaging.

US remains a technique that is operator dependent. Acquisition of images must be undertaken by a skilled and experienced operator; all staff providing ultrasound are trained medical staff or accredited through the Consortium for the Accreditation of Sonographic Education (CASE).

Requests for US examination should, take into account the appropriateness of the technology for the clinical condition and the suitability of the patient for US examination.

## CT Scanning

By appointment 8am - 8pm Mon - Fri. All UHL sites telephone 0116 258 8765

Computed tomography (CT) enables the acquisition of a large volume of data within a minimum time frame, enabling 3D reconstruction and image manipulation during the reporting process.

As with all radiological requests, any CT referral needs to fall within guidelines and sufficient clinical information provided to allow justification. Examinations that fall outside established guidelines can be discussed with a radiologist.

### Points for consideration:

- CT is a high radiation dose examination; however CT remains the best investigation for many clinical problems within the chest and abdomen, despite the radiation risks.
- CT is still widely used for intracranial problems, especially stroke and trauma.
- CT remains an effective method of staging many malignant diseases (such as lymphoma) and of monitoring the response to therapy.
- CT provides valuable preoperative information about complex masses and is widely used to investigate postoperative complications.

## MRI Scanning

By appointment 8am - 8pm Mon - Fri.  
All UHL sites telephone 0116 258 8765.

Magnetic Resonance Imaging (MRI) provides cross sectional imaging without the use of ionising radiation and should be considered in preference to CT when both investigations could yield similar information.

As with all radiological requests, any MRI referral should be provided with sufficient clinical information to allow justification. Examinations that fall outside established guidelines can be discussed with a radiologist.

### Further points to note:

- Contraindications to the use of MRI include metallic foreign bodies in the orbits, aneurysm clips, pacemakers and cochlear implants. Furthermore, MRI will give reduced image quality close to prostheses. Possible contraindications should be discussed with the imaging department well in advance of the proposed investigation.
- The safety of MRI during the first trimester of pregnancy is uncertain. However, it may well be safer than some of the alternative options. All imaging of pregnant women should be discussed with the radiology department.

## Nuclear Medicine

By appointment 9am - 5pm Mon - Fri.  
All UHL sites, telephone 0116 258 8765.

This service is delivered by a mix of NM physicians, technicians and radiologists who hold the Administration of Radioactive Substances Advisory Committee (ARSAC) licence.

Radionuclide imaging involves the administration of a small quantity of radioactive material to provide functional information for a given clinical situation.

Referring clinicians should indicate the precise clinical problem requiring investigation since this will determine which radionuclide (or alternative) investigation is used.

The radiation doses imparted by most NM techniques compare favourably with those of many other imaging investigations regarded as 'safe'.

PET-CT is currently provided at UHL through partnership with independent providers and the national contract.

## Imaging and medical physics continued

### **Fluoroscopy/Interventional Radiology**

By appointment 9am - 5pm Mon - Fri. All UHL sites, telephone 0116 258 8765.

Dynamic fluoroscopic studies of the GI and GU tract are provided demonstrating anatomy, pathology and function of these systems.

A full range of image-guided intervention and treatment are provided, e.g. biopsies, embolisation, steroid injections, line insertions as well as vascular procedures.

Interventional examinations need to follow clinical guidelines and may require discussion through the appropriate clinical channels.

#### **Breast Imaging/screening**

Breast imaging including mammography is provided to the Leicestershire and Rutland Breast Screening service and symptomatic patients referred via UHL surgeons.

### **Image reporting**

All images are reported on the Radiology Information System (CRIS) in a timely manner and are electronically available. Results may also be sent to the referring clinician/hospital where required. No additional reports are sent unless specifically requested.

All images and reports are stored on the UHL PACS system electronically. Images can be made available via the Image Exchange Portal for clinical management. Other formats are available on request (a charge may be applicable).

Some images may be reported through independent partners, these reports will be available through the UHL systems above.

**For reporting enquires please contact: 0116 258 3689**

# Immunology services (Adult)

**Clinical Head of Service:** Dr M Duddridge

**Main telephone number:** 0116 258 6708

**Main fax number:** 0116 258 5833

## Site delivered from

Leicester Royal Infirmary

## Consultants working within this Service

Dr M Duddridge

Dr R Barretto

## How to access this service

Choose and Book and consultant referrals.

## Service details

**Immune Deficiency** (a UK Primary Immunodeficiency Network registered centre)

- Adult patients with both suspected primary and secondary immune deficiencies are assessed and evaluated in the immunodeficiency clinic jointly run by Dr M Duddridge & Dr R Barretto at Leicester Royal Infirmary on Thursday morning.
- Patients are seen with primary antibody deficiency, antibody deficiency secondary to drug therapy (immunosuppressive agents / DMARDs and anticonvulsants), antibody deficiency secondary to haematological malignancy (B-CLL/lymphoma and myeloma), late-onset combined immunodeficiency, complement deficiency, susceptibility to mycobacterial (and other intracellular) infection, defects of neutrophil function, and rarer problems.
  - This includes patients with severe, persistent, unusual or recurrent infection (SPUR). *Also see ESID 10 warning signs of PID* ([www.esid.org/clinical-10-warning-signs-of-pid-general-339-0](http://www.esid.org/clinical-10-warning-signs-of-pid-general-339-0)) and *ESID 6 warning signs of PID in adults* ([www.esid.org/clinical-6-warning-signs-for-pid-in-adults-175-0](http://www.esid.org/clinical-6-warning-signs-for-pid-in-adults-175-0)).
  - Those patients requiring multiple courses of antibiotics each year for relatively mild community acquired infection.
  - Severe infection (i.e. bacterial meningitis, herpes simplex virus encephalitis, or deep skin abscesses/organ abscesses) with a family history of such infection.
  - Those patients with unusual problems such as severe viral warts or persistent fungal/candida (but not vaginal candida) infection.

- Patients with both **hereditary and acquired C1 esterase inhibitor deficiency** are a particular interest. Many of our patients have a home emergency supply of C1 esterase inhibitor, and an increasing number are being offered training for self-administered home emergency treatment with C1 esterase inhibitor. We have historically obtained funding for prophylactic treatment with C1 esterase inhibitor during pregnancy where appropriate.
- Specialist nurses support the clinic (spirometry testing), provide patient information, and perform diagnostic test immunisations to fulfil diagnostic criteria for the diagnosis of antibody deficiency.
- Laboratory tests are supported by the CPA-accredited Immunology laboratory at Leicester Royal Infirmary, and specialised testing arranged at national and international reference laboratories as appropriate (including specialised genetic testing).
- New patient referrals are seen during inpatient admission as necessary.
- Arrangements for transition between the children's immunodeficiency service and the adult immunodeficiency service are made on an individual basis at present.

## Immunoglobulin replacement therapy service:

- Patients who fulfil national criteria for immunoglobulin replacement therapy are discussed at the monthly immunodeficiency multidisciplinary team meeting to confirm that an initial 12 month trial of immunoglobulin replacement therapy is appropriate.
- All patient outcomes of the initial 12 month trial are reviewed at the MDT, and for those patients with a "blue indication" continuing therapy is reviewed every year thereafter.
- Approx 75% of our patient cohort are on home therapy, the majority of these on home subcutaneous immunoglobulin replacement therapy. Training for home therapy is delivered by our specialist nurses on the day case unit over a minimum of six sessions (typically 8-10).
- Approx 25% of our patient cohort remain on hospital-based intravenous immunoglobulin replacement therapy delivered by the specialist nurses on a Monday or Tuesday. These patients are reviewed at least every 6 months during the attendance for regular therapy.



# Immunology services (Adult) continued

- Home therapy patients are typically reviewed at least every 6 months in a multidisciplinary clinic with both medical and specialist nursing staff, with a home visit by the specialist nurse at least every 24 months to check infusion technique.

## **Autoinflammatory disease (periodic fever syndromes) (Dr M Duddridge & Dr Baretto):**

- Classified as primary immunodeficiencies by the European Society for Immune Deficiencies (ESID).
- Adult patients with suspected periodic fever syndromes (which may include rash, joint pain, muscle pain, conjunctivitis, lymphadenopathy, pleurisy, abdominal pain secondary to serositis, with elevation of CRP in an attack, or persistent unexplained elevation of CRP) are usually seen in the Thursday morning joint Immunodeficiency clinic.
- Treatment with anakinra is available as targeted biological therapy for these diseases as appropriate.

## **Systemic vasculitis and severe autoimmune disease (Dr M Duddridge):**

- Adult patients with suspected or known systemic vasculitis (including Wegener's granulomatosis, microscopic polyangiitis, Churg-Strauss syndrome and Behcet's disease) are assessed and followed up in the Immunology clinics on either a Thursday morning or Monday afternoon. Many of these will be tertiary referrals from other hospital services.
- Patients treated with immunosuppressive therapy are monitored by the Immunology clinic with an appropriate testing frequency, and changes to treatment initiated by the clinic.
- Drugs such as mycophenolate mofetil, oral cyclophosphamide, ciclosporin, tacrolimus, sirolimus are prescribed from the Immunology clinic as LMSG "red light" drugs unless exceptionally agreed otherwise.
- Day case treatment with pulse intravenous cyclophosphamide is available as required.
- For patients refractory to conventional immunosuppressive therapy, alternative treatments including rituxumab and infliximab are available for appropriate cases.

## **Allergy clinics and food allergy clinic (extended scope practitioner-led service) (Dr R Baretto and Mrs C Steele) – see Allergy section**

- Both Immunology and Allergy specialists contribute to the allergy clinics in Leicester, both services contributing to the comprehensive service described under the Allergy section of this document.
- The Immunology service was one of the first in the UK to develop an extended scope practitioner senior dietician-led food allergy clinic which receives a considerable number of patient compliments on a regular basis.
- A Primary Immunodeficiency MDT meeting has been established for many years.
- The Immunology service is actively involved in clinical audit and research.
- A specialist nurse led audit of our home subcutaneous immunoglobulin therapy programme was awarded best specialist nurse poster prize at the biennial UK Primary Immunodeficiency Network meeting in 2007.
- A specialist registrar led audit of awareness of primary immune deficiency in patients with chest infections admitted to medical admission units demonstrated significant impact of an educational programme and was awarded best specialist registrar poster prize at the biennial UK Primary Immunodeficiency Network meeting in 2011.

# Immunology - Children's

**Clinical Head of Service:** Dr M Browning

**Main telephone number:** 0116 258 5970

**Main fax number:** 0116 25 87637

**Site delivered from**

Leicester Royal Infirmary

**Consultants working within this Service**

Dr M Browning

**How to access this service**

Choose & Book.

**Service details**

- Inpatient & Out patient services
- Home immunoglobulin service.

# Infectious diseases services

**Clinical Head of Service:** Prof K.Nicholson

**Main telephone number:** 0116 258 6816

**Main fax number:** 0116 258 5067

## Site delivered from

Leicester Royal Infirmary

## Consultants working within this Service

Dr M.J. Wiselka

Dr D. Bell

Dr I. Stephenson

Dr A. J. Grant - Hepatitis Clinics Only

## How to access to this service

Emergency services, Choose and Book.

## Consultant by written referral to:

Leicester Royal Infirmary

Infectious Diseases Unit

Level 6

Windsor Building

Infirmary Square

Leicester LE1 5WW

## Service details:

Outpatients Clinics are based only at the Leicester Royal Infirmary.

The specialty will see patients with Tropical Diseases, Hepatitis, HIV, TB, General Infectious diseases, Swine Flu, Isolation.

Inpatients IDU.

We also have a nurse specialist who can visit certain patients outside of the hospitals.

# Inflammatory bowel disease

**Clinical Head of Service:** Dr A Grant

**Main telephone number:** 0116 256 3495

**Main fax number:** 0116 256 3422

## Sites delivered from

Glenfield Hospital

## Consultants working within this Service

- Dr J Decaesteckar
- Dr R Robinson
- Dr S Shah

## How to access this service

Choose and Book.

## Service details

Based at the Glenfield hospital. This is an outpatient service.



# Services M-Z

**Andre Ng**  
Consultant Cardiologist



# Max fax

**Clinical Head of Service:** Mr I Ormiston  
Consultant Surgeon

**Main telephone number:** Maxillofacial Office  
(Mr Ormiston's Secretary) - 0116 258 5300

**Service Manager:** 07508822842

**Main fax number:**  
Referrals Management Office - 0116 204 7860

**Secretaries' Office:** 0116 258 5205

**Site delivered from**  
Leicester Royal Infirmary

## Consultants working within this Service

Mr I Ormiston

Mr J Hayter

Mr C Avery

## How to access this service

Choose & Book / 2WW.

## Service details

Leicester Royal Infirmary Maxillofacial Surgery offers the following services:

- Head & Neck Cancer MDT service
- Orthognathic Care
- Facial trauma
- Complex surgical tooth removals with either general or local anaesthesia
- Care of oral pathologies
- TMJ pain

Peripheral clinics at Loughborough, Coalville, Market Harborough, Melton Mowbray & Hinckley.

# Metabolic - children's

**Clinical Head of Service:** Dr J Forster

**Main telephone number:** 0116 258 5970

**Main fax number:** 0116 258 7637

**Service Manager:** Tina Clegg

## Site delivered from

Leicester Royal Infirmary

## Consultants working within this Service

Dr J Forster

Dr M Sherratt -Sheffield network

## How to access this service

### Paper referral to:

Childrens Hospital Referrals Management Team

Childrens Admin Centre

Leicester Royal Infirmary

Infirmery Square

Leicester LE1 5WW

Or by fax to number above.

## Service details

- Joint clinics with Sheffield Consultants
- Inpatient & Out patient clinics
- Dietetic support.



# Neonatal service

**Clinical Head of Service:** Dr A Currie

**Main telephone number:**

- 0116 258 5522
- 0116 258 5522
- 0116 258 7707

**Main fax number:** 0116 258 5502

## Sites delivered from

Leicester Royal Infirmary and Leicester General Hospital

## Consultants working within this Service

Dr A Currie  
 Professor D Field  
 Dr E Boyle  
 Dr J Cusack  
 Dr W Hoskyns  
 Dr J Fawke  
 Dr V Kairamkonda  
 Dr R Miralles  
 Dr A Akuma  
 Dr A Grover (Locum)

## How to access this service

LRI switchboard or the above telephone/fax numbers.

## Service details

The neonatal service is a tertiary neonatal intensive care service caring for sick newborn infants for Leicester, Leicestershire and Rutland area as well as the Central Newborn Network of Neonatal Units.

The service is split across two sites with the Intensive care unit being based at the Leicester Royal Infirmary and a smaller, special care unit based at the Leicester General Hospital. In addition to caring for newborn infants we also provide an out-patient service for infants under 1 year of age.

We run the regional neonatal surgical service and are also a referral centre for therapeutic hypothermia. We also provide a neonatal outreach service for very sick and premature infants once they are discharged home and also provide neonatal advice to the ECMO service based at Glenfield Hospital.

# Nephrology

**Clinical Head of Service:** Professor N Brunskill

**Main telephone number:** 0116 258 4115

**Main fax number:** 0116 258 4764

**Site delivered from**

Leicester General Hospital

**Consultants working within this Service**

Professor N Brunskill

Dr R AlJouyousi

Dr J Barratt

Dr R Baines

Professor S Carr

Professor J Feehally

Dr K Harris

Dr J Medcalf

Dr P Topham

Dr G Warwick

Dr R Westacott

**How to access this service**

Choose & Book for one-stop new outpatient clinic.

This service can also be accessed by sending a paper referral to:

Dear Dr  
Nephrology Department  
Leicester General Hospital  
Gwendolen Road  
Leicester  
LE5 4PE

**Service details**

General Nephrology.

# Nephrology - Children's

**Clinical Head of Service:** Dr P Houtman

**Main telephone number:** 01162585970

**Main fax number:** 0116 2587637

**Service Manager:** Tina Clegg

## Site delivered from

Leicester Royal Infirmary

## Consultants working within this Service

Dr P Houtman

## How to access this service

### Please send paper referral to:

Childrens Hospital Referrals Management Team  
Childrens Admin Centre  
Leicester Royal Infirmary  
Infirmary Square  
Leicester LE1 5ww or fax to 01162587637

## Service details

Inpatient & Out patient services.

# Neurology service

**Clinical Head of Service:** Dr P Critchley

**Main telephone number:**

• 0116 258 4576 • 0116 258 4387

**Main fax number:** 0116 2584094

## Site delivered from

Leicester Royal Infirmary  
Leicester General Hospital

## Consultants working within this Service

Dr P Eames  
Dr U Jayatunga  
Dr M Lawden  
Dr E Nikfekar  
Dr Y Rajabally

## How to access this service

**Emergency services, Choose and Book, to  
Neurology Consultant by written referral:**

Neurology Department  
Gwendolen Road  
Leicester  
LE5 4PW

## Service details

Neurology out-patients and administration are based at the Leicester General Hospital which is part of the University Hospitals of Leicester. The Neurology beds are based on ward 24 at Leicester Royal Infirmary, alongside the stroke beds on the neurosciences floor. There is also a 7 bedded brain injury unit and an 8 bedded neurological rehabilitation unit (the YDU) both at Leicester General Hospital.

The Department provides a Neurological service to the population of Leicestershire (900,000). There is a major commitment to the teaching of medical undergraduates from the Leicester University Medical School.

The neurophysiology service is based predominantly at the Leicester Royal Infirmary site, and provides a comprehensive set of diagnostic tests.

The department liaises clinically with Neuro-radiology, and Neurophysiology. The Neurosurgical service is, at present, provided from Queen's Medical Centre, Nottingham. There are academic teaching links with Leicester University.

# Neurology - children's

**Clinical Head of Service:** Dr L Dabydeen

**Main telephone number:** 0116 258 5970

**Main fax number:** 0116 258 7637

## Site delivered from

Leicester Royal Infirmary

## Consultants working within this Service

Dr N Hussein

Dr L Dabydeen

## How to access to this service

### Outpatients via letter referral to:

Childrens Hospital Referrals Management Team

Childrens Admin Centre

Leicester Royal Infirmary

Infirmary Square

Leicester LE1 5WW

Or by fax to number above.

Emergency access via Emergency Department  
or Children's Assessment Unit.

## Service details

Out patient and inpatient services

Epilepsy Specialist nurse

Ketogenic diet

Video telemetry.

# Neurosurgery

**Clinical Head of Service:**

Visiting consultants from QMC Nottingham

**Main telephone number:**

• 0116 258 4576 • 0116 258 4387

**Main fax number:** 0116 2584094

**Site delivered from**

Leicester Royal Infirmary

**Consultants working within this Service**

Visiting consultants from QMC Nottingham

**How to access this service**

Choose and book.

**Service details**

Neurology out-patients and administration are based at the Leicester General Hospital which is part of the University Hospitals of Leicester.

The Department provides a Neurological service to the population of Leicestershire (900,000). There is a major commitment to the teaching of medical undergraduates from the Leicester University Medical School.

Neurosurgery is an outpatient based service for both new and follow up referrals and are attended by two Neurosurgical Consultants from QMC. The access points are via choose and book and/or consultant to consultant referral.

There is no neurosurgical inpatient facility at UHL so patients needing admission either for diagnostics and /or treatment will travel to QMC.

# Obesity service

**Clinical Head of Service:** Mr A Miller

**Main telephone number:** 0116 258 6716

**Main fax number:** 0116 204 7860

## Sites delivered from

Leicester Royal Infirmary

## Consultants working within this Service

Mr S Ubhi

Mr D Bowrey

Mr C Sutton

Mr R Williams

Mr D Exon

## How to access this service

Community dieticians on agreed clinical pathway.

## Service details

Elective Bariatric service based at Leicester Royal Infirmary.

# Obstetrics and fetal maternal medicine

**Clinical Head of Service:** Ms C Oppenheimer

**Main telephone number:**

Leicester Royal Infirmary

• 0116 258 5923

• 0116 258 7770

Leicester General Hospital

0116 258 4832

0116 258 8140

**Main fax number:**

Leicester Royal Infirmary: 0116 258 5923

Leicester General Hospital: 0116 273 1620

**Sites delivered from**

Leicester Royal Infirmary and Leicester General Hospital

**Consultants working within this Service**

Consultants have a primary base in one unit but all work cross-site.

**Leicester General Hospital:**

Ms A Doshani

Ms A Matiluko

Mr O Navti

Mr I Scudamore

Ms T Singhal

Prof D Tincello

Ms U Venkitaraman

**Leicester Royal Infirmary:**

Ms A Akkad

Mr R DeChazal

Ms M Khare

Ms H Maybury

Mr H Mousa

Ms C Oppenheimer

Ms P McParland

Ms F Siddiqui

Ms C Wiesender

Prof J Konje

**How to access this service**

The telephone and fax numbers listed above, GPs can also fax or post letters to the service.

**Service details**

The Maternity Service provides antenatal, intrapartum and postnatal care with close working relationships between midwifery and obstetric staff and between hospital and community staff. Antenatal care for women with no additional risk factors is midwifery-led and women with pre-existing medical, social, psychological or obstetric risks or problems arising during pregnancy or puerperium are assessed and care provided under consultant supervision.

Pre-pregnancy assessment and counselling and bereavement and debriefing services are also provided by consultants.

There is a range of expertise and special provisions and joint working – for women with diabetes, renal problems, hypertensive disease, haematological disorders, vulnerable women etc. This is supported by an expert team of obstetric anaesthetists and pathology.

Sub specialist Fetal Medicine is under the supervision of four subspecialty trained consultants with support from other consultants with diagnostic and procedure skills. There is a strong Fetal Cardiology service and joint clinics with Paediatric Surgeons and Genetics and neonatology for pregnancy and delivery planning and care of the neonate after delivery.

Consultants welcome close links with General Practice to provide appropriate care for the women and their families.



# Occupational therapy services

**Clinical Head of Service:** H Crossley / C Grace

**Main telephone number:** 0116 258 5204

**Main fax number:** 0116 258 6823

## Sites delivered from

All three hospital sites

## Consultants working within this Service

Not applicable

## How to access this service

### Written referral to:

Occupational Therapy Outpatient Department  
Level 0 Balmoral Building  
Leicester Royal Infirmary  
Infirmary Square  
Leicester  
LE1 5WW

## Service details

### Outpatient service for adults:

- Musculo skeletal conditions
- Neuro conditions
- Rheumatology
- Burns and plastics

Treatment is provided within the occupational therapy department; conditions may dictate which hospital site an appointment is offered at.

Range of treatments may include splinting, joint education (RA) and upper limb rehab (Neuro).

# Older peoples services

**Clinical Head of Service:** Dr S Conroy

**Main telephone number:** 0116 258 5058

**Main fax number:** 0116 258 5449

## Site delivered from

Leicester Royal Infirmary

## Consultants working within this Service

Dr E Laithwaite

Dr D Lakhani

Dr N Lo

Dr A Miodrag

Dr N Morgan

Dr A Patel

Dr P Patel

Dr J Reid

Dr N Shah

Dr N Vijayakumar

Dr R Wong

## How to access to this service

Emergency services, Choose and Book.

## Service details

The Department of Geriatric Medicine in Leicester is one of the leading services in the country delivering interface geriatrics - a fusion of community geriatrics and acute geriatrics.

In the last year we have redesigned our acute services to try and help improve the care of frail older people. The two main services are the Emergency Frailty Unit (EFU) and the Frail Older Peoples' Advice and Liaison Service (FOPAL). The development of EFU and FOPAL services at the Leicester Royal Infirmary make up the strategy at University Hospitals of Leicester (UHL) for creating a 'frail friendly front door'. The aim of these services is to try to improve the care received by frail older people in hospital and reduce unnecessary hospital admissions, lengths of stay and readmissions. Each of the services works to deliver comprehensive geriatric assessment for each identified frail older person, joining together doctors, nurses, physiotherapists, occupational therapists, primary care co-ordinators, physician assistants and discharge specialists to provide an integrated response. The services provide an assessment covering not only medical aspects but psychological,

social, environmental and functional assessment. This assessment therefore does not only identify, treat and manage the patient's initial reason for presenting to hospital but also works to reduce readmission rates by looking at the patient holistically.

## Team members

- Simon Conroy, Head of Service & Harborough locality
- Graham Fancourt, cardiogeriatrics lead
- Nelson Lo, Parkinson's disease lead
- Alex Miodrag, continence lead & Oakham locality
- Vijayakumar Narayanaswami, city intermediate care
- James Reid, orthogeriatrics & Hinckley locality
- Richard Wong, intermediate care & Oadby & Wigston locality
- Dilesh Lakhani, falls lead
- Nicolette Morgan, orthogeriatrics lead & city intermediate care
- Ash Patel, city intermediate care
- Nainal Shah, dementia & delirium lead, Melton locality
- Emily Laithwaite, Emergency Frailty Unit lead & Loughborough locality
- Riaz Mappilakkandy (locum), Blaby & Lutterworth locality
- Prity Patel, orthogeriatrics & North-West Leicestershire locality

Unlike most other medical specialties, geriatric medicine does not deal with a single organ system or type of disease process. The key patient group for Geriatric Medicine is frail older patients who often have multiple chronic diseases and may also have cognitive and social problems. Geriatricians work within a team to deliver Comprehensive Geriatric Assessment<sup>1-5</sup> to undertake a holistic assessment of the older person. The most important aspect of treatment is to identify reversible or treatable medical conditions. The key is working as part of a multidisciplinary team with nurses, therapists, and colleagues from social services to rehabilitate, support, and finally helping our patients to return to a community setting.

## Emergency Frailty Unit (EFU)

### Lead Dr E Laithwaite

The EFU is a central area within the Emergency Decisions Unit designed to improve the quality of care and decision making for frail older people in the

# Older peoples services continued

Emergency department. It delivers multidisciplinary assessment from nurses, primary care coordinators, therapists and geriatricians at the front door enabling patients to have comprehensive geriatric assessment at presentation to facilitate an appropriate patient pathway. These patients are transferred to EFU rather than admitted to AMU for assessment.

There is a multidisciplinary ward round of these patients every morning focussed on determining a frail older person's medical, psychological and functional capability in order to develop a coordinated and integrated plan for treatment and follow-up. The length of stay for patients 85+ on EFU is 0.4 days, and the overall discharge rate for 85+ has increased by 20-40% compared to last year. The Geriatricians work closely with ED and provide in reach into ED throughout the day - supporting the ED staff with the assessment of older people.

We are currently developing an EFU outreach service. This involves a primary care coordinator from the EFU working jointly with community teams to case manage selected high risk frail older people who have recently been discharged from EFU to ensure they receive the right care, at the right time, in the right place.

## Frail Older Persons' Advice and Liaison (FOPAL)

### Lead Dr S Conroy

The FOPAL service provides in-patient support only for older people with psychiatric or geriatric syndromes. It runs Monday to Friday, 9-5pm and supports mainly the LEICESTER ROYAL INFIRMARY and the Glenfield with ad hoc support to the LGH.

FOPAL offers support to the base wards and the AMU for frail older people, including problems such as:

- Confusion
- Immobility
- Parkinson's disease
- Falls
- Continence
- Capacity/refusing treatment

In conjunction with EFU, the number of patients being admitted to hospital for in-patient care has reduced by around 25%.

## Orthogeriatrics

### Lead Dr N Morgan

In 2011 the orthogeriatric service moved from being reactive to proactive and there are now consultant geriatricians available to see patients with hip fracture on a daily basis (Monday to Friday); the units performance has been turned around from being in the bottom to the top quartile in the national tables.

## Other services

- Outpatient clinics, of which there are now 24 in place offering a variety of services across the City and County.
- Support to City intermediate care services.
- Weekly ward rounds in 10 community hospital wards from August 2011, including working with community matrons on those at highest risk of adverse outcomes.
- Management of 5.5 acute wards across UHL from July 2011.
- Daily ward rounds and weekly Multidisciplinary Team Meetings by Orthogeriatricians to improve care to patients with fractured neck of femurs-our performance in this area has moved from bottom to top quartile.

## Relevant links

- <http://www.bgs.org.uk/>
- <http://www.nottingham.ac.uk/chs/research/projects/mcop.aspx>
- <http://www2.le.ac.uk/departments/cardiovascular-sciences/people/conroy/silver-book>

## References

1. Ellis G, Whitehead M, O'Neill D, Robinson D, Langhorne P. Comprehensive geriatric assessment for older adults admitted to hospital. Cochrane Library: Cochrane collaboration, 2011.
2. Beswick AD, Rees K, Dieppe P, Ayis S, Gooberman-Hill R, Horwood J, et al. Complex interventions to improve physical function and maintain independent living in elderly people: a systematic review and meta-analysis. [see comment]. *Lancet* 2008;371(9614):725-35.
3. Stuck AE, Siu AL, Wieland GD, Rubenstein LZ, Adams J. Comprehensive geriatric assessment: a meta-analysis of controlled trials. *The Lancet* 1993;342(8878):1032-36.
4. Ellis G, Langhorne P. Comprehensive geriatric assessment for older hospital patients. *Br Med Bull* 2005;71(1):45-59.
5. Baztan JJ, Suarez-Garcia FM, Lopez-Arrieta J, Rodriguez-Manas L, Rodriguez-Artalejo F. Effectiveness of acute geriatric units on functional decline, living at home, and case fatality among older patients admitted to hospital for acute medical disorders: meta-analysis. *BMJ* 2009;338(jan22\_2):b50-.

# Oncology

**Clinical Head of Service:** Dr C Esler

**Main telephone number:**

Oncology Admin Office: 0116 258 5642/6217

Chemotherapy Suite: 0116 258 6107

Radiotherapy Department: 0116 258 5640

Main fax number: 0116 258 5942

**Site delivered from**

Leicester Royal Infirmary

**Consultants working within this Service**

Dr C Esler Consultant Clinical Oncologist: Sarcoma, lung, Teenage/Young Adults Cancer

Dr G Thomas Consultant Clinical Oncologist: Lung, haematological malignancies

Dr I Boiangiu Consultant Clinical Oncologist: Breast, CNS

Prof P Symonds Consultant Clinical Oncologist: Gynaecology, Urology

Dr S Vasanthan Consultant Clinical Oncologist: Gynaecology, urology, colorectal

Dr D Peel Consultant Clinical Oncologist: Head and Neck, gynaecology, HPB, Thyroid

Dr T Sridhar Consultant Clinical Oncologist: Head and Neck, UPGI, colorectal, Germ Cell

Dr I Peat Consultant Clinical Oncologist: Breast, HPB, UPGI, skin

Dr S Ahmed Consultant Medical Oncologist: Breast, lung, sarcoma

Prof W Steward Consultant Medical Oncologist: Colorectal, HPB

Dr A Thomas Consultant Medical Oncologist: Colorectal, HPB, UPGI

Dr S Nicholson Consultant Medical Oncologist: Urology, skin, Germ Cell

Dr A Osman Associate Specialist (Clinical Oncology): Colorectal, skin, breast

**How to access this service**

Largely a tertiary referral service.

Patients who have previously received treatment and are still under the care of Oncology may be referred directly to an Oncologist by the GP. You can do this either by telephoning the hospital switchboard on 0116 258 3000 and asking for the oncology on call registrar, or alternatively be faxing a letter to the number above or telephoning the number above.

**Service details**

- Situated in the Osborne Building at the Leicester Royal Infirmary
- 38 in-patient beds
- 5 bedded assessment unit for all oncological and haematological emergencies
- Chemotherapy suite
- Radiotherapy Department.

For patients aged 19-24 years inclusive please refer to East Midlands Teenage and Young Adults Integrated Cancer Service.

# Oncology - Children's

**Clinical Head of Service:** Dr J Visser

**Main telephone number:** 01162585970

**Main fax number:** 0116 2587637

**Service Manager:** Tina Clegg

## Site delivered from

Leicester Royal Infirmary

## Consultants working within this Service

Dr J Visser

Dr E Ross

Dr D Heney

Dr M Mabrouk

## How to access this service

2ww.

## Service details

Joint principle treatment centre with Nottingham University Hospitals

Inpatient and out patient services

Chemotherapy

Palliative care.

# Ophthalmology services

**Clinical Head of Service:** Mrs J Burns

**Main telephone number:** 0116 258 6177

**Main fax number:** 0116 258 5927

## Sites delivered from

Leicester Royal Infirmary

## Consultants working within this Service

- Mr R Chaudhuri
- Ms S Anwar
- Mr W Karwatowski
- Mr U Sarodia
- Mr J Prydal
- Ms N Sarvanathan
- Miss K Bibby
- Mr G Woodruff (retiring 05/12 )
- Mr S Banerjee
- Mr R Sampath
- Mrs J Burns
- Prof I Gottlob
- Mr T Empeslidis
- Mr V Savant

## How to access this service

Choose and Book.

## Service details

Emergencies via the Eye Emergency Department during opening hours:

- 08:30 - 16:30 Mon – Fri
- 08:30 - 12:30 Sat, Sun and bank holidays.

The Ophthalmic department comprises of a multi disciplinary team of Ophthalmologists, Nurses, Orthoptists, Optometrists and Photographers providing specialised and general eye services for both adults and children.

# Orthodontics & Restorative Dentistry

**Clinical Head of Service:** Mrs A Mosaku  
Consultant Restorative Dentist

**Main telephone number:**  
• 0116 258 3525 • 0116 258 3526

**Service Manager:** 07508822842

**Main fax number:** 0116 250 2421

## Site delivered from

Glenfield Hospital

## Consultants working within this Service

Mrs A Mosaku

Mr F Deans

Mr R Samuels

Miss C Tracey

## How to access this service

Choose & Book.

However 90% of referrals are received directly from General Dental Practitioners.

## Service details

**Orthodontics and Restorative Dentistry at the Glenfield Hospital offers the following services:**

Endodontics

Hypodontia care

Dental trauma

Orthodontics

Restorative Dentistry

Cleft lip & palate care

Implants.

# Paediatric General Surgery

**Clinical Head of Service:** Mr S Nour

**Main telephone number:** 0116 258 5970

**Main fax number:** 0116 258 7637

**Service Manager:** Mr N Kirk

## Site delivered from

Leicester Royal Infirmary

## Consultants working within this Service

Mr S Nour

Mr G Ninan

Mr A Rajimwale

Mr B Eradi

Mr N Patwardhan

## How to access this service

### Choose & book or paper referral to:

Childrens Hospital Referrals Management Team

Childrens Admin Centre

Leicester Royal Infirmary

Infirmary Square

Leicester LE1 5WW

Or by fax to number above.

Emergency access through ED or assessment unit.

## Service details

Inpatient, Day case & out patient services.

### Clinics held at:

Loughborough

Market Harborough,

Northampton

Kettering

Nuneaton

Peterborough.



# Paediatric Urology

**Clinical Head of Service:** VACANT

**Main telephone number:** 0116 258 5970

**Main fax number:** 0116 258 7637

**Service Manager:** Mr N Kirk

## Site delivered from

Leicester Royal Infirmary

## Consultants working within this Service

Mr G Ninan

Mr A Rajimwale

## How to access this service

### Choose and Book or paper referral to:

Childrens Hospital Referrals Management Team  
Childrens Admin Centre  
Leicester Royal Infirmary  
Infirmary Square  
Leicester LE1 5WW

Or by fax to number above.

Emergency access through assessment unit or ED.

# Pain management services

**Clinical Head of Service:** Dr M Bone

**Main telephone number:** 0116 258 7528

**Main fax number:** 0116 258 7528

## Sites delivered from

Leicester Royal Infirmary and Leicester General Hospital

## Consultants working within this Service

- Dr M Bone
- Dr B Collett
- Prof D Rowbotham
- Dr E Lin
- Dr S Tordoff
- Dr J Tring
- Dr N Gopinath
- Dr K Tighe (in patient only)

## How to access this service

Choose and book.

## Service details

This is a consultant led service and CNS supported out patient and day case treatment service for the full range of chronic pain problems.

Includes specialist Pelvic pain and Paediatric multidisciplinary pain clinics. Specialist pain and psychiatric clinic with a specialist interest in drug dependency, alongside a Specialist pain management programme.

# Physiotherapy services

**Clinical Head of Service:** L Cooke

**Main telephone number:**

- Leicester Royal Infirmary:  
0116 258 5816 or 0116 258 5113
- Leicester General Hospital:  
0116 258 4070 or 0116 258 4073
- Glenfield Hospital:  
0116 258 3595 or 0116 250 2585

**Main fax number:**

Leicester Royal Infirmary: 0116 258 6193  
Leicester General Hospital: 0116 258 4071  
Glenfield Hospital: 0116 258 3916

**Sites delivered from**

All three hospital sites

**Consultants working within this Service**

Not applicable

**How to access this service**

Choose and book.

Written letter to the physiotherapy service using the below addresses.

**Leicester Royal Infirmary**

Physiotherapy Department  
Level 0  
Balmoral building  
Infirmary Square  
Leicester LE1 5WW

**Leicester General Hospital**

Physiotherapy Department  
Gwendolen Road  
Leicester LE5 4PW

**Glenfield Hospital**

Physiotherapy Department  
Groby Road  
Leicester LE3 9QP

**Service details**

Outpatient service for adults and children including:

- Musculo-skeletal conditions
- Neurological conditions
- Rheumatology
- Burns and plastics
- Respiratory conditions
- Women's health (including MSK conditions in pregnancy, and treatment of urinary and faecal incontinence).

# Plastic surgery

**Clinical Head of Service:** Mr S Varma

**Main telephone number:**

Plastic Surgery Office: 0116 258 5852

Service Manager: 07930519736

**Main fax number:**

Referrals Management: 0116 204 7680

**Sites delivered from**

Leicester Royal Infirmary

**Consultants working within this Service**

- Mr D J Ward
- Mr G J Offer
- Mr M Smith
- Mr N Yii
- Mr S Varma
- Miss Agawarl
- Mr G Rauf
- vMiss Daruwalla

**How to access this service**

Choose & Book and 2WW referrals.

**Service details**

Leicester Royal Infirmary plastic surgery department offers the following services:

- Major & minor Breast Reconstructive Surgery following treatment for Breast Cancers
- Nipple reconstruction & pigmentation
- Skin lesion & skin cancer excisions +/- Skin grafting
- Corrective surgery following significant weight loss
- Non cosmetic breast reductions/augmentation
- We are the nominated burns facility for the East Midlands plus surgical procedures and skin grafting for burns.
- Lipofilling & Liposuction
- Scar revisions
- Hand trauma surgery
- Burns & plastics dressings clinic with specialist nurse outreach support
- Skin cancer MDT
- Peripheral clinics & theatre lists at Hinckley, Corby, Melton, Lincoln & Boston.

# Respiratory disorders, lung disorders and thoracic medicine

**Clinical Head of Service:** Dr J Bennett

**Main telephone number:** 0116 258 3691

**Main fax number:** 0116 236 7768

## Site delivered from

Glenfield Hospital

## Consultants working within this Service

Dr S Range

Professor P Bradding

Dr R Green

Dr I Pavord

Dr M Peake

Professor M Morgan

Dr M Steiner

Dr C Free

Dr S Agawal

Dr N Khan

Prof A Wardlaw

Dr C Brightling

Dr G Woltman

Dr C Ohri

Dr J Bennett

Mr D Waller

Mr S Rathinam

Mr A Nakas

## How to access this service

Choose and Book.

## Service details

We provide specialist services for the investigation and treatment of patients with respiratory conditions from Leicestershire, Rutland and surrounding areas. The Department has developed rapidly over the last decade and is the only respiratory facility for the whole district of 1 million population. The inpatient base is at Glenfield Hospital but clinics are held throughout the district. We work closely with Thoracic Surgery and General Medicine. Thoracic surgical referrals are also taken from other adjoining counties. Our process means that emergency patients are admitted directly to the Glenfield Hospital CDU. Respiratory Medicine has also been leading with admission avoidance strategies including piloting ambulatory care for patients with suspected pulmonary emboli and pleural disease.

Respiratory Medicine provides a full range of diagnostic investigations including a fully equipped respiratory physiology lab and are at the cutting edge of new specialist developments including bronchial thermoplasty, endobronchial ultrasound and medical thoracoscopy. We are supported by CT, MRI and radionuclide imaging, palliative care, pain services and extensive intensive care facilities.

We also have four major areas of research interest within the department and have recently secured Biomedical Research Unit Funding. These are the assessment of airway inflammation (Prof I D Pavord, Dr RH Green, Prof C Brightling); Eosinophil and mast cell biology in asthma (Prof Wardlaw/ Prof P Bradding, Prof C Brightling); Disability and rehabilitation in COPD (Prof Morgan/ Prof Singh/Dr Steiner); Lung cancer and mesothelioma (Mr Waller/Dr Peake/Dr Bennett/ Dr Free/Dr Agrawal)

## We offer the following services:

### On-Call Consultant

0116 2871471 (available 24/7)

### Asthma (including tertiary multidisciplinary Difficult Asthma Clinic)

0116 2563451

Ruth Green, Ian Pavord, Andrew Wardlaw, Chris Brightling, Peter Bradding, Salman Siddiqui

### Bronchiectasis and Adult Cystic Fibrosis

0116 2502667

Simon Range, Chandra Ohri

### Clinical Decisions Unit – admission of cardio-respiratory emergencies

0116 2563772 or on-call consultant 0116 2871471 (available 24/7)

### Cough

0116 2502388

Ian Pavord, Chris Brightling

### Interstitial Lung Disease

0116 2502610

Sanjay Agrawal

### Lung Cancer

0116 2502610

Jon Bennett, Mick Peake, Catherine Free, Sanjay Agrawal

# Respiratory disorders, lung disorders and thoracic medicine continued

## **Mesothelioma**

0116 2563959  
David Waller,  
0116 2563739  
Liz Darlison

## **Pleural Effusion Clinic – ambulatory service**

0116  
Neil Martin

## **Pulmonary Rehabilitation**

0116 2502535  
Mike Morgan, Mick Steiner, Sally Singh

## **Pulmonary Emboli – Ambulatory PE clinic**

0116 2563311  
Catherine Free

## **Rapid Access Airway Diagnostic Service**

0116 2502388  
Ian Pavord

## **Respiratory Physiology**

0116 2563420  
DD Vara, Richard Walton

## **Respiratory Sports Medicine**

0116 2583450  
Neil Martin

## **Sleep & Non-invasive Ventilation**

0116 2563663  
Mike Morgan, Mick Steiner

## **Pleural Diseases/ Thoracoscopy**

0116 2502610  
Jon Bennett, Catherine Free, Sanjay Agrawal,  
Neil Martin, David Waller

## **Tuberculosis**

0116 2502640  
Gerrit Woltmann, Pranab Haldar

## **Thoracic Surgery**

0116 2563959  
Mr David Waller, Mr Apo Nakas, Mr S Rathinam

# Rheumatology services

**Clinical Head of Service:** Dr J Francis

**Main telephone number:**

Leicester Royal Infirmary - 0116 258 7676  
Leicester General Hospital - 0116 258 4410

**Main fax number:**

Leicester Royal Infirmary - 0116 258 5833  
Leicester General Hospital 0116 258 4926

**Site delivered from**

All three hospital sites

**Consultants working within this Service**

Dr A Kinder  
Dr A Moorthy  
Dr A Samanta  
Dr J B Francis  
Dr P Sheldon  
Dr R L Neame  
Dr W Hassan

**How to access this service**

Emergency services, Choose and Book, to Consultant by written referral, please send to:

**Leicester General Hospital**

OPD1 Back Office  
Gwendolen Road  
Leicester  
LE5 4PW

**Leicester Royal Infirmary**

Clinic Co-ordinators Office  
Marriott Ward  
Level 2  
Victoria Building  
Infirmary Square  
Leicester  
LE1 5WW

**Service details**

Rheumatology out-patients and administration are based both at all three UHL sites. Leicester Royal Infirmary, Leicester General Hospital and Glenfield Hospital.

The Specialty also has satellite clinics at Market Harborough, Melton Mowbray, Oakham and Hinckley.

The Rheumatology Service will see patients with:

- Connective Tissue Diseases
- Inflammatory Arthritis
- Metabolic Bone Disease
- Vasculitis
- Osteoarthritis
- Seronegative Arthritis

The Rheumatology beds are based on Ward 24 at the Leicester Royal Infirmary. Patients also attend the Odames Ward for day case procedures such as intravenous therapies, Joint Injections, Muscle Biopsies and Epidural.

**Useful sources of other information**

- Arthritis Care: [www.arthritiscare.org.uk](http://www.arthritiscare.org.uk)
- American College of Rheumatology: [www.rheumatology.org.uk](http://www.rheumatology.org.uk)
- Arthritis Research Campaign: [www.arc.org.uk](http://www.arc.org.uk)
- British Society for Rheumatology: [www.rheumatology.org.uk](http://www.rheumatology.org.uk)
- National Rheumatoid Arthritis Society: [www.nras.org.uk](http://www.nras.org.uk)
- Lupus UK: [www.lupusuk.org.uk](http://www.lupusuk.org.uk)

# Rheumatology - Children's

**Clinical Head of Service:** Dr Sridhar

**Main telephone number:** 0116 258 5970

**Main fax number:** 0116 258 7637

## Site delivered from

Leicester Royal Infirmary

## Consultants working within this Service

Dr Sridhar

Dr Houtman

## How to access this service

### Choose & Book or via paper referral to:

Childrens Hospital Referrals Management Team

Childrens Admin Centre

Leicester Royal Infirmary

Infirmery Square

Leicester LE1 5WW

Or by fax to number above.

## Service details

- Inpatient
- Outpatient
- Methotrexate monitoring
- Joint injections.



# Sexual Health - Genitourinary Medicine

**Clinical Head of Service:** Dr A Palfreeman

**Main telephone number:** 0116 258 5208

**Main fax number:** 0116 258 5005

## Site delivered from

Leicester Royal Infirmary

## Consultants working within this Service

Dr F Ibrahim

Dr J Dhar

Dr MK Malu

Dr P Schober

Dr A Palfreeman

## How to access this service

Walk in service 6 days per week

On line booking for patients through [www.leicestersexualhealth.nhs.uk](http://www.leicestersexualhealth.nhs.uk)

By telephone booking on number above

## Service details

Leicester Royal Infirmary is the clinical training and administrative centre for GUM and currently provides clinical services 6 days a week with a combination of walk-in clinics 6 mornings per week and 2 afternoons per week and 1 evening a week and appointment clinics 2 afternoons per week. This includes a Saturday morning walk in clinic. The clinic also offers 5 appointment clinics per week for patients with HIV.

UHL also provide GUM services to one prison in Leicester and 1 young offenders unit in Leicestershire. A clinic session is also provided at the Leicester General Hospital one morning per week. A booked integrated clinic providing both sexual health screening and a contraception at St Peters Health Centre one morning per week.

The service also provides outreach in the community one session a week into saunas where women work to provide sex services and one session a week in a male only sauna.

# Sleep disorders

**Clinical Head of Service:** Dr A Hall

**Main telephone number:**

0116 258 8106 or 0116 258 8262

**Main fax number:** 0116 258 8174

## Sites delivered from

Leicester General Hospital

## Consultants working within this Service

- Dr A Hall
- Dr P Graff-Baker

## How to access this service

Completion and attachment to referral of completed Epworth sleepiness scale and Berlin questionnaire (links below).

<http://yoursleep.aasmnet.org/pdf/Epworth.pdf>

[http://www.alegent.com/documents/Sleep\\_eval.pdf](http://www.alegent.com/documents/Sleep_eval.pdf)

## Service details

Service provides diagnostics and treatments for obstructive sleep apnoea in addition to complex sleep disorders including narcolepsy, rapid eye movement sleep disorder, periodic limb movements and restless legs syndrome.

# Sleep - children's

**Clinical Head of Service:** Dr D Luyt  
**Main telephone number:** 0116 258 5970  
**Main fax number:** 0116 258 7637  
**Service Manager:** Mr N Kirk

**Site delivered from**  
Leicester Royal Infirmary

**Consultants working within this Service**  
Dr D Luyt

**How to access this service**  
Choose and Book.  
Childrens Hospital Referrals Management Team  
Childrens Admin Centre  
Leicester Royal Infirmary  
Infirmary Square  
Leicester LE1 5WW

Or by fax to number above.

**Service details**

- Inpatient, Day case & out patient services
- Sleep studies, and appropriate interventional treatment

# Speech and language therapy

**Clinical Head of Service:** L Carruthers

**Main telephone number:** 0116 295 4692

**Main fax number:** 0116 295 4698

## Sites delivered from

The speech and language therapy service for adults is provided by Leicestershire Partnership Trust and is delivered at all three Hospital sites.

## Consultants working within this Service

Not applicable

## How to access this service

Contacting the service base at:

Prince Philip House,  
Malabar Road,  
Leicester  
LE1 2NZ.

Alternatively you can contact the service on the telephone and fax numbers listed above.

## Service details

The service has specialist speech and language therapists working across services in all three hospitals in head and neck cancer, stroke, critical care, neurology, brain injury and dysphagia.

# Sports medicine

**Clinical Head of Service:** Mr K Boyd

**Main telephone number:** 0116 258 4365

**Main fax number:** 0116 258 4748

## Sites delivered from

Leicester General Hospital

## Consultants working within this Service

Mr K Boyd

Dr P Wheeler

## How to access this service

Choose and Book.

## Paper referrals sent to:

Sports Medicine Dept

Leicester General Hospital

Gwendolen Road

Leicester

LE5 4PW

## Service details

The Sport & Exercise Medicine (SEM) department has been based at the Leicester General Hospital since 1993 and offers a multi-disciplinary team comprising Sports Medicine physicians, an Orthopaedic surgeon, extended-scope physiotherapists, a podiatrist and nurse practitioners.

We see new patients with a broad-range of musculoskeletal disorders including tendinopathies, joint problems, muscle injuries, and many other causes of musculoskeletal pain. We are able to offer a wide range of conservative and surgical management options within the department. In addition, we can assist with the management of medical conditions that impact upon, or can be improved by physical activity. We can provide specialist exercise medicine advice for patient groups such as those with physical disabilities or who are pregnant.

We are able to offer specialist management options to patients within the NHS including guided injection procedures, novel interventional therapies as well as providing a specialist clinic for exertional lower limb pain for which we receive patients from around the country.

We carefully audit our clinical practice as well as undertaking regular patient satisfaction surveys in which we have achieved a score of over 99% across all domains.

We are extensively involved in the teaching and training of new specialist doctors in Sport & Exercise Medicine, as well playing an active research portfolio with links to several UK universities.

# Stroke and TIA service

**Clinical Head of Service:** Dr M Fotherby

**Main telephone number:**

- 0116 258 4042
- 0116 258 4442
- 0116 258 5431

**Main fax number:** 0116 258 6730

0116 258 4926

**Site delivered from**

Leicester Royal Infirmary

**Consultants working within this Service**

Dr A Mistri  
Dr S Dawson  
Dr D Eveson  
Dr M Fotherby  
Dr C Machili  
Dr R Marsh  
Dr S Treadwell  
Professor T Robinson

**How to access this service**

Emergency services, referral to the TIA clinic using relevant referral form and to stroke clinic by written referral to:

OPD 1 Back Office  
Gwendolen Road  
Leicester  
LE5 4PW

**Service details**

Acute stroke services and the TIA clinic are based at Leicester Royal Infirmary. Stroke rehabilitation services are based at LGH ward 8 and two community hospitals, St Lukes and Coalville. General stroke clinics are held at the LGH. The stroke service will see all patients >18 years with any type of stroke (excluding sub-dural haematomas and sub-arachnoid bleeds).

## TB - children's

**Clinical Head of Service:** Dr W Hoskyns

**Main telephone number:** 0116 258 5970

**Main fax number:** 0116 258 7637

**Service Manager:** Mr N Kirk

### Site delivered from

Leicester Royal Infirmary

### Consultants working within this Service

Dr W Hoskyns

### How to access this service

#### Paper referral to:

Childrens Hospital referrals management team

Childrens Admin Centre

Leicester Royal Infirmary

Infirmery Square

Leicester LE1 5WW

Or by fax to number above.

### Service details

- Screening
- Outpatients
- Inpatients.

# Transplant (General Surgery - Endocrine Surgery)

**Clinical Head of Service:**

Professor M Nicholson

**Main telephone number:** 0116 258 4115

**Main fax number:** 0116 2584764

**Site delivered from**

Leicester General Hospital

**Consultants working within this Service**

Professor M Nicholson

**How to access this service**

Choose & Book. However paper referrals are also accepted and should be addressed to:

Dear Dr  
Department of Transplant  
Leicester General Hospital  
Gwendolen Road  
Leicester  
LE5 4PW

**Service details**

Endocrine surgery.



# Trauma and Orthopaedics - children's

**Clinical Head of Service:** Mr A Furlong  
**Main telephone number:** 0116 258 5970  
**Main fax number:** 0116 258 7637  
**Service Manager:** Mr N Kirk

## Site delivered from

Leicester Royal Infirmary

## Consultants working within this Service

Mr A Furlong  
 Mr C Kershaw  
 Mr A Abraham  
 Plus Adult Trauma Consultants

## How to access this service

Choose and book or paper referral to:

Childrens Hospital Referrals Management Team  
 Childrens Admin Centre  
 Leicester Royal Infirmary  
 Infirmary Square  
 Leicester LE1 5WW

Or by fax to number above.

Emergency referrals via ED

## Service details

- Inpatient, Day case & out patient services
- Orthotic services via partner organisation.

# Upper GI / General Surgery

**Clinical Head of Service:** Mr A Miller

**Main telephone number:** 0116 258 6716

**Main fax number:** 0116 204 7860

**Site delivered from**

Leicester Royal Infirmary

**Consultants working within this Service**

Mr S Ubhi

Mr D Bowrey

Mr C Sutton

Mr R Williams

Mr D Exon

**How to access this service**

Choose and Book.

**Service details**

Outpatient, elective, daycase and emergency services based at Leicester Royal Infirmary.

# Urology services

**Clinical Head of Service:** Mr M Khan

**Main telephone number:** 0116 258 4872

**Main fax number:** 0116 258 4242

## Sites delivered from

Leicester General Hospital

## Consultants working within this Service

- Mr Khan
- Mr Goddard
- Mr Terry
- Mr Summerton
- Prof Mellon
- Mr Griffiths
- Mr Kockelbergh
- Mr Butterworth

## How to access this service

Choose and Book, paper referrals and Emergency admissions.

## Paper referrals please send to:

Urology Clinic Co-ordinators  
C/O Renal Admin Offices,  
Ground Floor  
Leicester General Hospital  
LE5 4PW

## Service details

Treatments and services offered at the Urology department:

- Balanitis
- Bladder stones
- Cancer
- Cancer of the bladder
- Cancer of the kidney
- Cancer of the prostate
- Cancer of the testicle
- Cancer of the uterus
- Destruction of kidney stones
- Diagnostic endoscopy of the bladder (Cystoscopy)
- Dilatation and curettage (D&C)
- Erectile dysfunction
- Examination of the uterus (Hysteroscopy)
- Fibroids
- Hysterectomy
- Incontinence- bowel
- Incontinence urinary
- Infertility
- Keyhole prostate surgery (TURP)
- Male contraceptive pill
- Periods absent
- Periods heavy
- Periods irregular
- Periods painful
- Premenstrual syndrome
- Priapism
- Prolapse of the uterus
- Prostate disease
- Urinary tract infection
- Urology
- Vasectomy.

# Vascular surgery

**Clinical Head of Service:** Professor R Sayers

**Main telephone number:** 0116 258 7768

**Main fax number:** 0116 258 5029

## Sites delivered from

Leicester Royal Infirmary

## Consultants working within this Service

- Professor R Naylor
- Professor N London
- Professor R Sayers
- Mr M Brown
- Mr M McCarthy
- Mr A Nasim
- Mr M Dennis

## How to access this service

Choose and Book or paper referral to be sent to:

Vascular Surgery Department  
Level 6 Balmoral Building  
Leicester Royal Infirmary  
Infirmary Square  
Leicester  
LE1 5WW

## Service details

Leicester's hospitals are a comprehensive provider of Vascular Surgical services. Clinical performance which regularly tops National League tables is combined with an International reputation for teaching and research.

Our seven Vascular Surgery Consultants (3 of whom are Professors) lead a multi-professional team. We are proud of the quality of care delivered on our dedicated vascular ward at the LRI.

By working closely with five X Ray specialist Consultants we offer key-hole surgery for aortic aneurysms and blocked arteries in the legs.

Our stroke doctors have a daily clinic for "mini strokes". Some of these patients need urgent surgery on blocked neck arteries to the brain. We are an acknowledged expert provider of this operation.

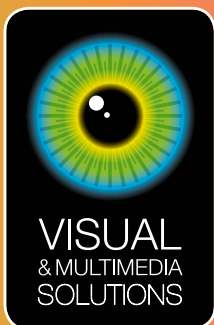
Our surgical work is crucially supported by dedicated vascular anaesthetists and a fully equipped Intensive Care Department.

The most modern ultrasound scanning methods are provided by our vascular technologists in the vascular studies unit. This team is Nationally renowned for their skill and research and allows the diagnosis of circulation problems without needles or radiation.

40% of vascular problems occur as emergencies.

We offer round-the clock, 365 days a year

Consultant - provided care.



Design and photography by  
UHL Medical Illustration: 0116 258 6369

University Hospitals of Leicester



NHS Trust

*Caring at its best*