

# GP Newsletter

*Caring at its best*



Welcome to the March edition of the GP Newsletter

## E-Referral Service Update

Pilot for City CCG - Advice and Guidance Service on NHS E-Referral Service (ERS) for 2 Week Wait Lower GI Referrals



### The problem

Currently many referrals to the Lower GI 2ww service do not necessarily require investigations to exclude cancer (evidenced in part by the low incidence of cancer on investigation). However we recognise that access to advice or urgent appointments at UHL for lower GI problems could be improved.

### Solution (As a pilot, restricted to City CCG initially)

- From 29 March, UHL will offer an advice and guidance (A&G) service via the NHS E-Referral Service (ERS - previously known as Choose and Book), which is attached to the existing lower GI 2ww service on ERS
- And offer an urgent (within 4 weeks) Outpatient service where appropriate

### Process

GPs access A&G on ERS using the existing service called: **"2ww Cancer Lower GI-UHL-must book at time of referral. Patient must not attend this apt-2ww-GH-RWE"**. Within 48hrs (Mon-Fri) a UHL Colorectal Surgeon will provide a clinical response.

### The possible outcomes could be:

1. Clinical advice on how to manage the patient in primary care.
2. A request that the GP refers to the 2ww service today - "2ww Cancer Lower GI-UHL-must book at time of referral. Patient must not attend this apt-2ww-GH-RWE"
3. We will convert the Advice and Guidance request into a referral and arrange an appointment in our urgent

colorectal clinic, which will be booked outside of ERS. Please let the patient know that they will be contacted by UHL with an appointment.

4. We don't think this is cancer. Please refer into our routine Colorectal service (at LRI or LGH) via ERS. The services are called: "Colorectal Service (adult) - Colorectal Surgery - LRI - RWE" or "Colorectal Service (adult) - Colorectal Surgery - LGH - RWE".

We will monitor the impact and feedback the outcome of the pilot. If it is successful, we will continue the service and extend it to all CCGs.

### Charlie Carr

Head of Performance

### Kirsten Boyle

Consultant Colorectal surgeon

## Consultant Connect

We are now able to offer GPs fast access to telephone-based advice and guidance through Consultant Connect to the following specialties:

- Acute Medicine (excluding respiratory and cardiology)
- Diabetes
- Endocrinology
- Haematology - General and Malignant
- Haematology - Thrombosis and Anticoagulation

wish to speak urgently with someone regarding a possible admission.

If the first consultant on the rota is not in a position to take your call, it loops to the next consultant and so on until answered. Your call is also recorded and retained for medico-legal purposes.



The service is available between the hours of 9.00am and 5.00pm Monday to Friday and is designed to give you easy access to consultant advice if you

If your practice has not yet received their unique Consultant Connect telephone number or you have any questions, please contact Roger Tweedale at [roger.tweedale@consultantconnect.org.uk](mailto:roger.tweedale@consultantconnect.org.uk) or 07976 301877

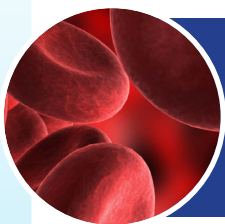
Julie Dixon Senior Site Manager

## UPDATE Reticulocyte Haemoglobin Content

In the last edition of the GP newsletter (February 2016), we informed you of a new haematology test being introduced to detect iron deficiency, named the Reticulocyte Haemoglobin Content (CHr) test.

This test is more sensitive at detecting iron deficiency than current protocols and can be used in patients with infection or inflammation (both of which would falsely increase ferritin results).

Initially, the test was due to be available by 1st March 2016 but unfortunately, there have been unforeseen IT complications which have delayed its introduction. We hope that these issues will be resolved within the next month and the test available by April 2016, and will keep you posted on any developments!



For further information please contact:  
April Sellors, Clinical Scientist  
[april.sellors@uhl-tr.nhs.uk](mailto:april.sellors@uhl-tr.nhs.uk)  
0116 258 6518

## Celebrating Success

We are delighted to share with Primary Care the next edition of 'Celebrating Success' which highlights how doctors in Leicester's Hospitals are leading the way in responding to patient feedback and how clinical teams are listening and acting upon what patients have said.

Feedback through the Friends and Family Test provides valuable insight into a patient's journey of care and is used to facilitate positive change across services, for example trialling a pager system which enables patients to go to the restaurant or Royal Voluntary Service coffee shop when clinics appointment times are running late. This allows patients the freedom to be away from the clinical area whilst waiting for their appointment and they are called back by the team when it is time for them to be seen.

[Click here](#) to access the electronic version

Michaela Thompson  
Patient Experience Sister



## Clinical Microbiology User Handbook

An updated version of the Clinical Microbiology User Handbook v9 is available to all users.

Please find below some key changes with the inclusion of some key points from v8.

### Key Personnel Change:

#### General Manager:

Jil Bowskill

#### Deputy General Manager

Sarah Johnson

(New appointment to start March 2016)

#### Deputy Laboratory Manager

Daxa Patel

(Virology & Molecular)

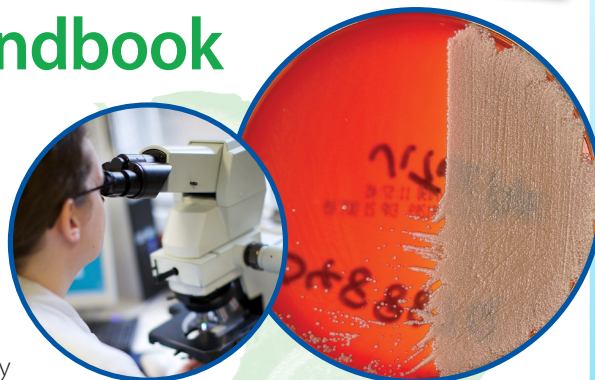
### Measurement of Uncertainty and Risk Management

Within any laboratory process or procedure there will always be a degree of variability. These will vary with specimen type and test. This is available on request.

### Turnaround time changes

(See handbook for specifics)

The handbook is under constant review and a new format is currently being worked on which will make information more readily accessible.



### It can be accessed using the following link:

<http://www.leicestershospitals.nhs.uk/aboutus/departments-services/pathology/clinical-microbiology/handbook/>

#### Dawn Williams

Quality Coordinator  
Clinical Microbiology



## Paediatric Milk Allergy Study

The Paediatric Allergy Team are involved in a study on IgE-mediated (immediate) milk allergy called PRESTO.

This is a study looking at whether pre and pro-biotics help infants outgrow their milk allergy. We wish to recruit infants < 12 months of age with a milk allergy who require input by the Allergy Team. Children who take part will be supplied with a milk formula for 12 months funded entirely by the study.

**If you have eligible patients who are interested in the study please contact:**

#### Dr Gary Stiefel

Paediatric Allergy Consultant

[childrensallergy@uhl-tr.nhs.uk](mailto:childrensallergy@uhl-tr.nhs.uk)



## Changes to Rubella screening in pregnancy

From 01 April 2016 it will no longer be necessary to screen for rubella immunity in pregnancy.

The MMR vaccination programme has now provided such a high level of "herd immunity" that it no longer fits the criteria for a national screening programme.

UHL will stop offering rubella immunity screening to women who "book" for their



antenatal care from 01 April 2016 but we will continue to offer MMR vaccinations to all of those women screened as "non-immune" over the course of the next year.

**Helen Ulyett**

Antenatal and Newborn screening Coordinator



**PRISM Update**  
IVF Criteria Policy has been placed in PRISM

## Advice and Guidance

The following services are all available on the NHS E-Referral Service (formerly Choose and Book) for Advice and Guidance. Instructions on how to use the service can be found here:

<http://www.leicestershospitals.nhs.uk/professionals/gp-referrals/nhs-e-referral-service/>



Service Name	Speciality
General Haematology - Clinical Haematology - LRI - RWE	Haematology
Colorectal Service Clinic - Colorectal Surgery - LGH - RWE	General Surgery
Adult General Surgery Service Clinic - General Surgery - LRI - RWE	General Surgery
Adult General Hepatology Service - Hepatology (Medical non surgical) - LRI - RWE	General Surgery
Hepatobiliary & Pancreatic Specialised Surgery - H&P - LGH - RWE	General Surgery
Adult Non-Inguinal Hernia Clinic - Generalised Surgery - LRI - RWE	General Surgery
Corneal Service - Ophthalmology - LRI - RWE	Ophthalmology
Eye Lid Service (Adult) - Ophthalmology - LRI - RWE	Ophthalmology
General Eye Clinic Service (Adult) - Ophthalmology - LRI - RWE	Ophthalmology
Glaucoma Service - Ophthalmology - LRI - RWE	Ophthalmology
Macular and Retinal Vascular Disease Service - Ophthalmology - LRI - RWE	Ophthalmology
Orbital and Lacrimal Service (Adult) - Ophthalmology - LRI - RWE	Ophthalmology
Paediatric Ophthalmology (General Service) Orthoptic & Optometry - Ophthalmology - LRI - RWE	Ophthalmology
General Nephrology Service- Nephrology - LGH - RWE	Nephrology
Adult General Dermatology Service - Dermatology - LRI - RWE	Dermatology

### COURSES AVAILABLE

#### Practical Paediatric Allergy

**Wednesday 25 and  
Thursday 26 May 2016**

**A 2-day Postgraduate course in the management of Paediatric Allergy to be held at the Clinical Education Centre, Glenfield Hospital.**

Topics to be covered will include: Rhinitis and Hay fever; Anaphylaxis; Urticaria; Milk, egg and Nut allergies and Exclusion diets. Practical workshops will include: Skin Prick testing; Adrenaline auto-injectors and Eczema Management

For further details and to book a place, please contact Warren Luyt at [warren.luyt@uhl-tr.nhs.uk](mailto:warren.luyt@uhl-tr.nhs.uk) or by phone 0116 2586694

#### MSc/PGDip Musculoskeletal Medicine

The 2 year part-time course is delivered by Loughborough University in association with the British Institute of Musculoskeletal Medicine and further details can be found here

<http://www.ncsem-em.org.uk/education/msk-medicine/>

It is aimed primarily at medical doctors, but is open to other regulated healthcare professionals working in musculoskeletal (MSK) medicine.

You will gain a qualification in the theory and practice of MSK medicine to enable you to practice in an MSK service, learn how to manage patients with MSK disorders at a primary and intermediate care level, and broaden your understanding and develop your clinical skills to manage MSK patients autonomously.

## Admission Avoidance Directory Revised

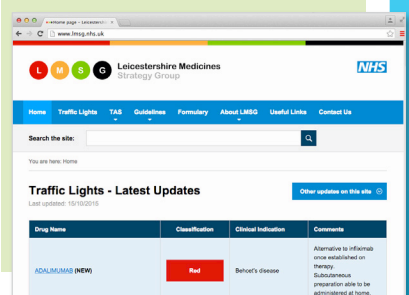
The directory has been significantly revised and expanded and includes information for accessing Rapid Access Clinics, "Hot Clinics", Admission Avoidance Services, and now includes Community Services listings which help avoid admission and support discharge. It can be found in PRISM and is also on our website:

<http://www.leicestershospitals.nhs.uk/professionals/>



## Leicestershire Medicines Strategy Group

New updates can be found on the LMSG webpage: [www.lmsg.nhs.uk/](http://www.lmsg.nhs.uk/)



# GP Education & Events

## Joint Injection Course

**23 April 2016**

8:30am - 1:30pm

**Venue:**

Leicester General Hospital

Cost: £75 (including refreshments and Brunch)

**Contact:**

[nichola.coleman@uhl-tr.nhs.uk](mailto:nichola.coleman@uhl-tr.nhs.uk)

0116 256 3016

**Course Description:**

- Hands on course for GPs which will cover Knee, Shoulder, Elbow, Hand, Wrist, Foot and Ankle and Trochanteric Bursitis.
- Lectures by Orthopaedic Surgeons discussing anatomy, portals, technique and contraindications

- Practical sessions on specific injection sites

For further details or to book a place, please contact: **Nichola Coleman**

## Leicestershire Palliative Care Group Study Day - Changes in Cancer Treatments and Future Directions

**05 May 2016**

9:00am - 4.00pm

Course Fee: £50

(CPD points available)

**Venue:**

Leicester Racecourse

**Contact:**

[karen.mann@uhl-tr.nhs.uk](mailto:karen.mann@uhl-tr.nhs.uk)

0116 258 7512

**Presentations / Presenters include:**

- Overview of Cancer Treatments and why Mortality Rates have Decreased - Dr Kufre Sampson
- New Radiotherapy Techniques - Dr Chris Kent
- Biological Treatments of Cancer - Dr Harriet Walter
- TYA Transition - Dr Laura Clipsham
- New Drugs in Palliative Medicine - Dr Luke Feathers
- Evidence for Alternative Treatments for Cancer - Dr Jeanna Strutinsky-Mason



Photo: Bob Smith

## A day about Headaches

**Speakers to include Neurologists, Rheumatologists, Ophthalmologists and Geriatricians.**

**01 July 2016** 9:30am - 4:30pm

To be held at the Marriott Hotel, Leicester

Free course for GPs

Further details to follow.

**To express your interest**

please contact Kenny Sunmboye Rheumatology SpR

[kehinde.o.sunmboye@uhl-tr.nhs.uk](mailto:kehinde.o.sunmboye@uhl-tr.nhs.uk)

SAVE  
THE  
DATE



If you would like more information about any articles in the newsletter or have suggestions for future editions, please do get in touch.

**Catherine Headley**

0116 258 8598

07432 623 350

[UHLGPServices@uhl-tr.nhs.uk](mailto:UHLGPServices@uhl-tr.nhs.uk)

## And finally...

**For general information** such as referring to us, GP education and previous editions of the GP newsletter, you can find it all (home or at work) by clicking here:

[www.leicestershospitals.nhs.uk/professionals/](http://www.leicestershospitals.nhs.uk/professionals/)

