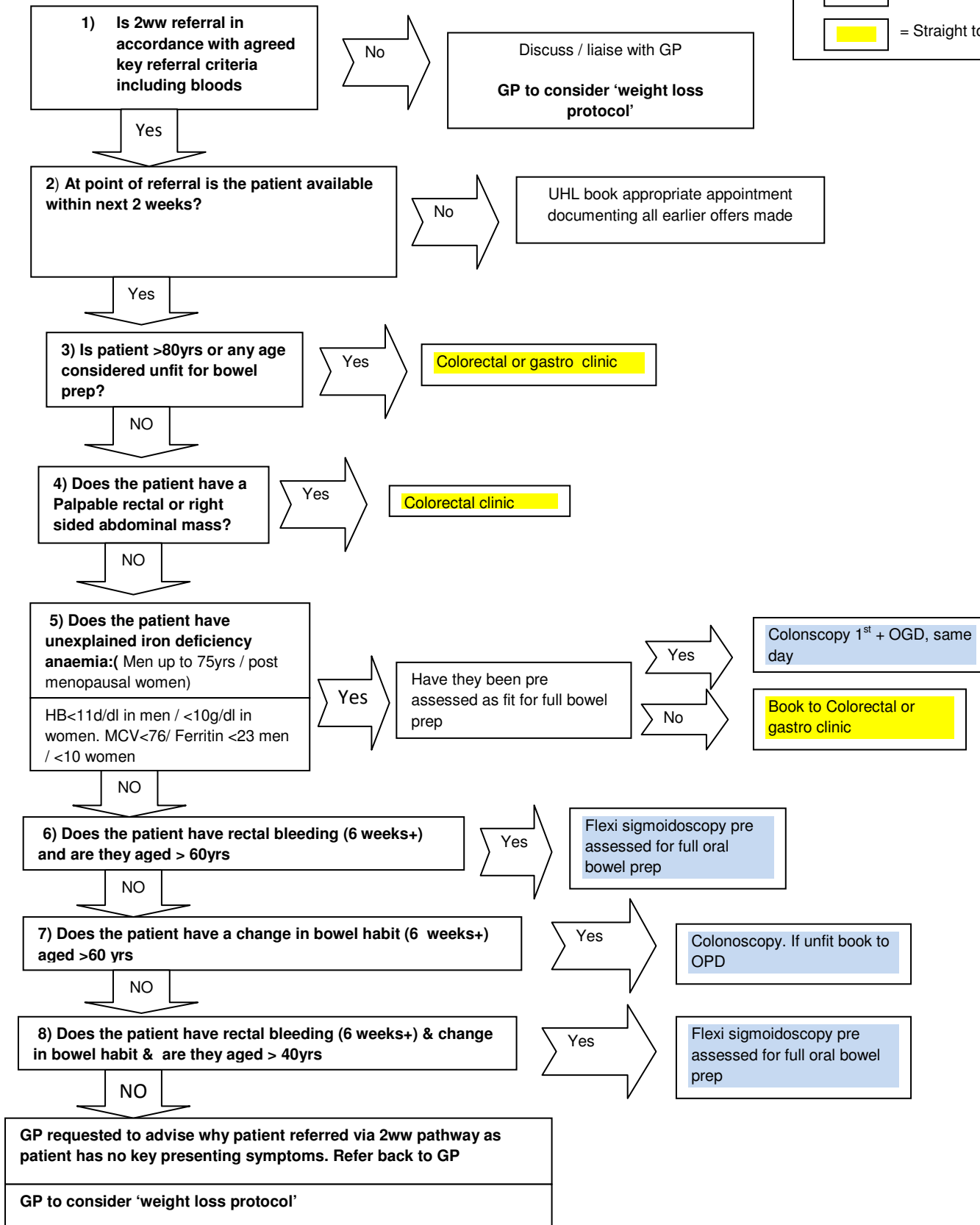


Lower gi cancer exclusion service
High level lower gi referral and diagnostic pathway

Key:

 = Straight to test

 = Straight to outpatient



NB: At time of endoscopy, endoscopist to take responsibility for next steps ie discharge back to GP or investigate further

At any point in diagnostic phase if the patient:-

- Requires further investigation for cancer – remain on 62 day pathway
- Requires further investigation but cancer excluded – remove from 62 pathway and monitor on referral to treatment routine
- Cancer excluded, does not require further investigation – refer back to GP